

14W / 1440lm / 4000K / DALI / Wide flood  
80° / 1152mm

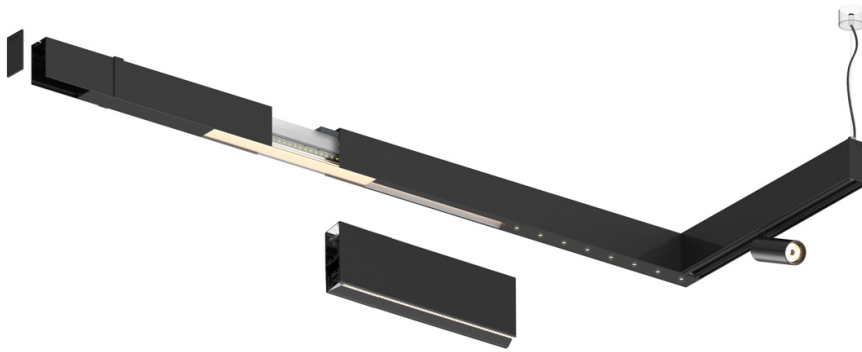
61225

Compatibility with other modules must be confirmed  
with [support@om-light.com](mailto:support@om-light.com)

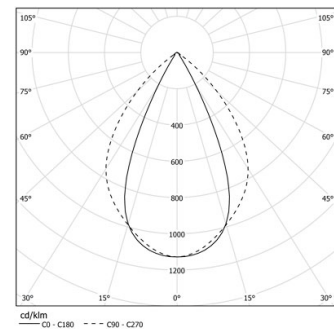
Design: OM + Bartenbach  
GmbH

Module with linear extruded lenses (Lightstream)  
combined with a secondary reflector, integrated into  
an extruded aluminium profile.

LED CRI>90 / >50.000h, L80/B10 / 2-step MacAdam  
Fonte de alimentação incluída.  
IP20 | 230Vac | 50/60Hz



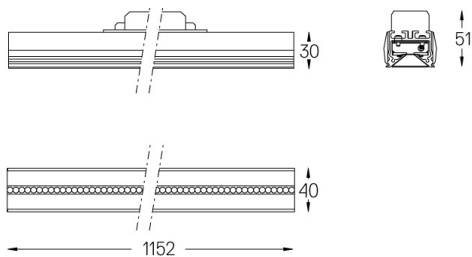
LED	4000K	Fonte de Luz	Luminária
Potência	14W	14W	16W
Fluxo	1800lm	1800lm	1440lm
Eficiência	136lm/W	136lm/W	92lm/W
LOR	-	-	0.8
UGR	-	-	<19



Ângulo de abertura  
**Wide flood 80°**

Aplicação

Peso



### Acabamentos

- .01 Branco / RAL 9010
- .02 Preto / RAL 9005

Para fornecimento específico de drivers "DALI 2" por favor contactar:  
[support@om-light.com](mailto:support@om-light.com)

Choose the length and layout of the system exactly as you want it, to  
model the right lighting functions for different tasks. For further  
information please contact: [support@om-light.com](mailto:support@om-light.com)