

19W / 2080lm / 4000K / DALI / Flood 65° /
1152mm

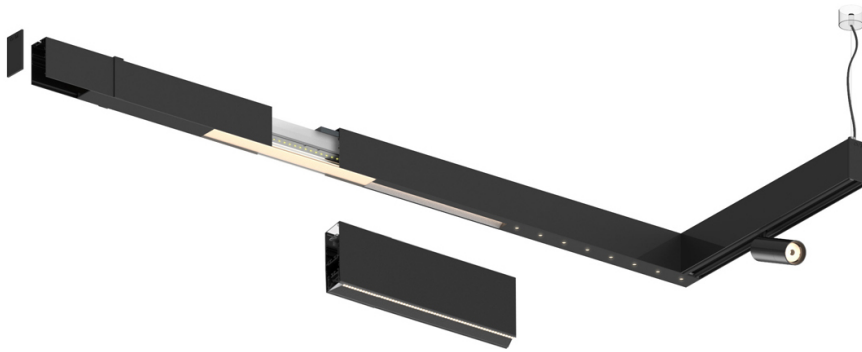
61224

Compatibility with other modules must be confirmed
with support@om-light.com

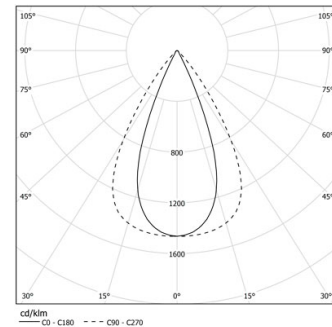
Design: OM + Bartenbach
GmbH

Module with linear extruded lenses (Lightstream)
combined with a secondary reflector, integrated into
an extruded aluminium profile.

LED CRI>90 / >50.000h, L80/B10 / 2-step MacAdam
Fonte de alimentação incluída.
IP20 | 230Vac | 50/60Hz



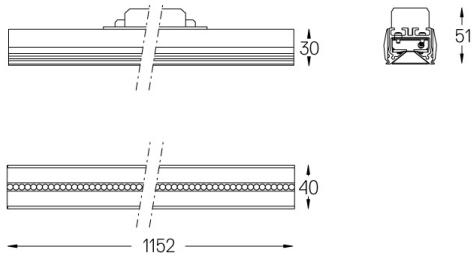
LED	4000K	Fonte de Luz	Luminária
Potência		19W	22W
Fluxo		2600lm	2080lm
Eficiência		141lm/W	96lm/W
LOR		-	0.8
UGR		-	<16



Ângulo de abertura
Flood 65°

Aplicação

Peso



Acabamentos

- .01 Branco / RAL 9010
- .02 Preto / RAL 9005

Para fornecimento específico de drivers "DALI 2" por favor contactar:
support@om-light.com

Choose the length and layout of the system exactly as you want it, to
model the right lighting functions for different tasks. For further
information please contact: support@om-light.com