

28W / 3120lm / 4000K / DALI / Flood 65° /
1747mm

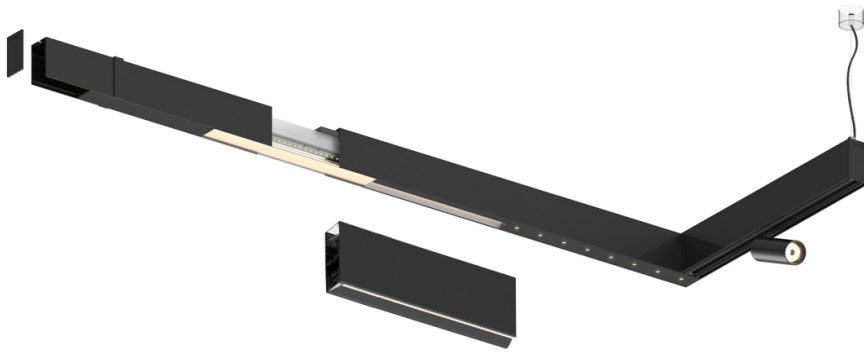
61184

Compatibility with other modules must be confirmed
with support@om-light.com

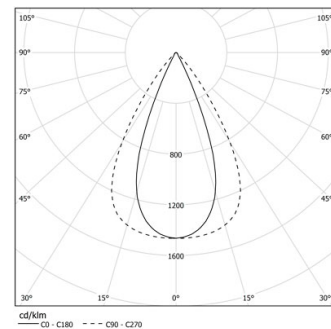
Design: OM + Bartenbach
GmbH

Module with linear extruded lenses (Lightstream)
combined with a secondary reflector, integrated into
an extruded aluminium profile.

LED CRI>90 / >50.000h, L80/B10 / 2-step MacAdam
Fonte de alimentação incluída.
IP20 | 230Vac | 50/60Hz



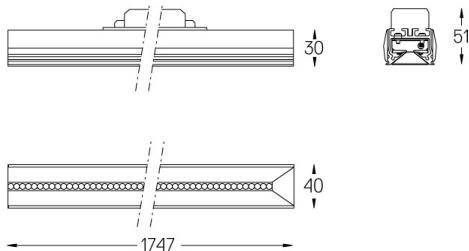
LED	4000K	Fonte de Luz	Luminária
Potência	28W		33W
Fluxo	3900lm		3120lm
Eficiência	141lm/W		96lm/W
LOR	-		0.8
UGR	-		<16



Ângulo de abertura
Flood 65°

Aplicação

Peso



Acabamentos

- .01 Branco / RAL 9010
- .02 Preto / RAL 9005

Para fornecimento específico de drivers "DALI 2" por favor contactar:
support@om-light.com

Choose the length and layout of the system exactly as you want it, to
model the right lighting functions for different tasks. For further
information please contact: support@om-light.com