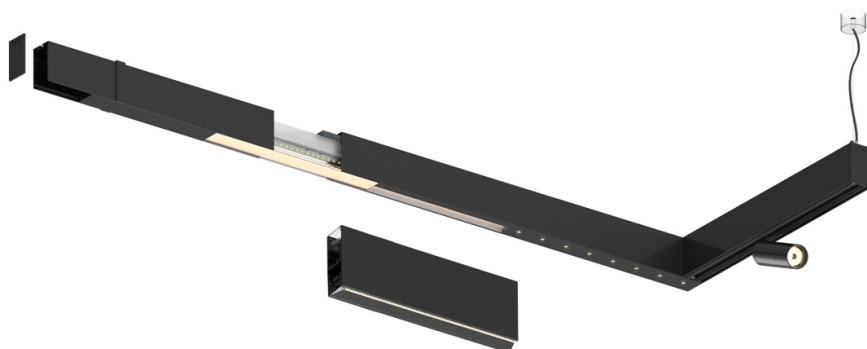
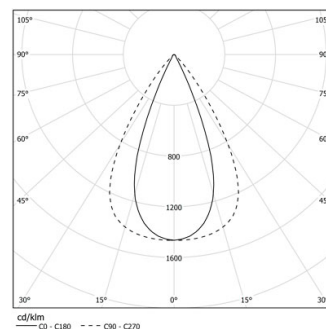


46W / 4800lm / 3000K / DALI / Flood 65° /
2880mm

63169

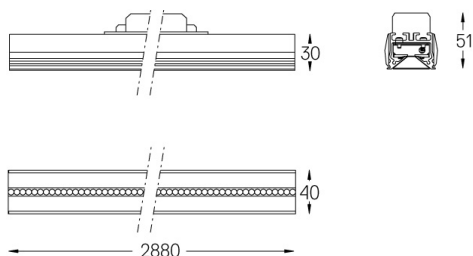
Compatibility with other modules must be confirmed
with support@om-light.comDesign: OM + Bartenbach
GmbHModule with linear extruded lenses (Lightstream)
combined with a secondary reflector, integrated into
an extruded aluminium profile.LED CRI>90 / >50.000h, L80/B10 / 2-step MacAdam
Fonte de alimentação incluída.
IP20 | 230Vac | 50/60Hz

LED	3000K	Fonte de Luz	Luminária
Potência		46W	54W
Fluxo		6000lm	4800lm
Eficiência		130lm/W	89lm/W
LOR		-	0.8
UGR		-	<16

Ângulo de abertura
Flood 65°

Aplicação

Peso



Acabamentos

- .01 Branco / RAL 9010
- .02 Preto / RAL 9005

Para fornecimento específico de drivers "DALI 2" por favor contactar:
support@om-light.comChoose the length and layout of the system exactly as you want it, to
model the right lighting functions for different tasks. For further
information please contact: support@om-light.com