

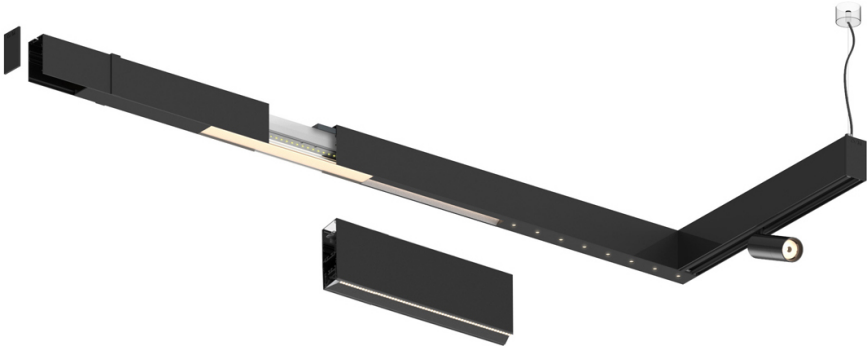


Compatibility with other modules must be confirmed with support@om-light.com

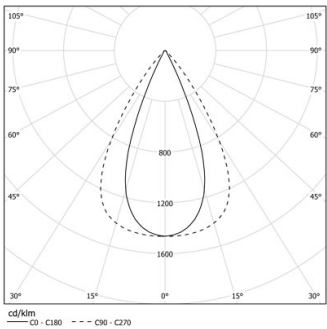
Design: OM + Bartenbach GmbH
Module with linear extruded lenses (Lightstream) combined with a secondary reflector, integrated into an extruded aluminium profile.

LED CRI>90 / >50.000h, L80/B10 / 2-step MacAdam
Fonte de alimentação incluída.
IP20 | 230Vac | 50/60Hz



 4000K	Fonte de Luz	Luminária
Potência	46W	54W
Fluxo	6500lm	5200lm
Eficiência	141lm/W	96lm/W
LOR	-	0.8
UGR	-	<16

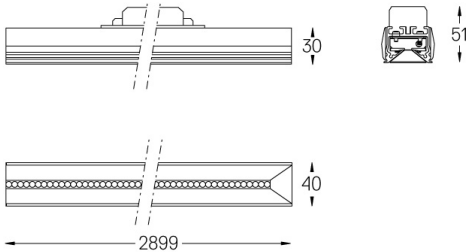




Ângulo de abertura
Flood 65°

Aplicação

Peso

 mm



- Acabamentos
-  .01 Branco / RAL 9010
 -  .02 Preto / RAL 9005

Para fornecimento específico de drivers "DALI 2" por favor contactar: support@om-light.com

Choose the length and layout of the system exactly as you want it, to model the right lighting functions for different tasks. For further information please contact: support@om-light.com