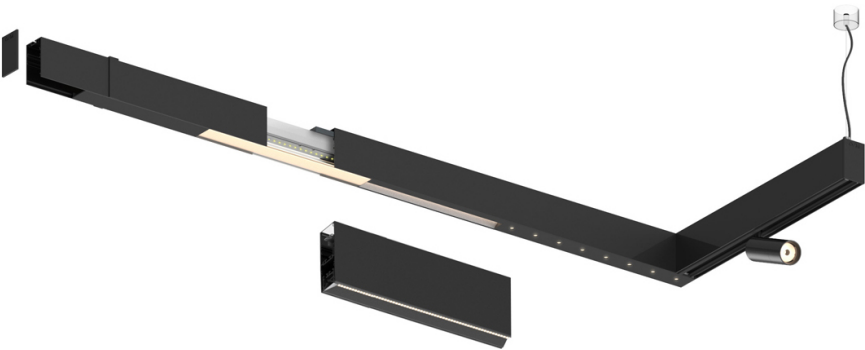


Compatibility with other modules must be confirmed
with support@om-light.com

Design: OM + Bartenbach
GmbH
Module with linear extruded lenses (Lightstream)
combined with a secondary reflector, integrated into
an extruded aluminium profile.

LED CRI>90 / >50.000h, L80/B10 / 2-step MacAdam
Fonte de alimentação incluída.
IP20 | 230Vac | 50/60Hz



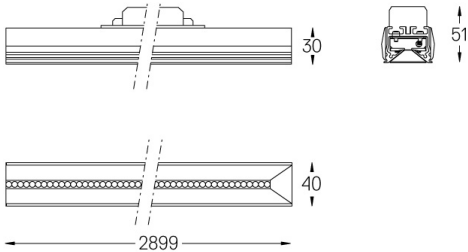
 3000K	Fonte de Luz	Luminária
Potência	53W	62W
Fluxo	6900lm	5500lm
Eficiência	130lm/W	89lm/W
LOR	-	0.8
UGR	-	<19



Ângulo de abertura
Wide flood 80°

Aplicação

Peso



- Acabamentos
- .01 Branco / RAL 9010
 - .02 Preto / RAL 9005

Para fornecimento específico de drivers "DALI 2" por favor contactar:
support@om-light.com

Choose the length and layout of the system exactly as you want it, to
model the right lighting functions for different tasks. For further
information please contact: support@om-light.com