

33W / 3400lm / 3000K / DALI / Flood 65° /  
2899mm

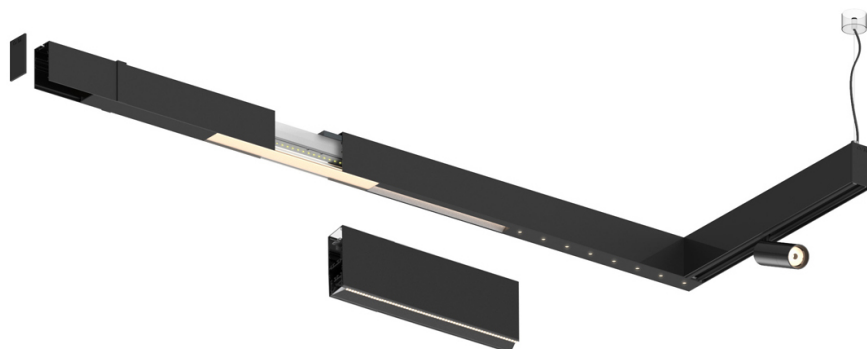
63152

Compatibility with other modules must be confirmed  
with [support@om-light.com](mailto:support@om-light.com)

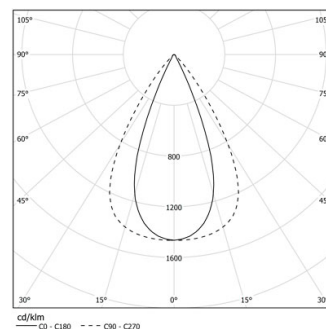
Design: OM + Bartenbach  
GmbH

Module with linear extruded lenses (Lightstream)  
combined with a secondary reflector, integrated into  
an extruded aluminium profile.

LED CRI>90 / >50.000h, L80/B10 / 2-step MacAdam  
Fonte de alimentação incluída.  
IP20 | 230Vac | 50/60Hz



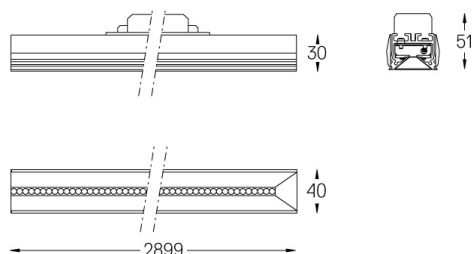
| LED        | 3000K   | Fonte de Luz | Luminária          |
|------------|---------|--------------|--------------------|
| Potência   | 33W     |              | 39W                |
| Fluxo      | 4200lm  |              | 3400lm             |
| Eficiência | 127lm/W |              | 87lm/W             |
| LOR        | -       |              | 0.8100000000000001 |
| UGR        | -       |              | <13                |



Ângulo de abertura  
Flood 65°

Aplicação

Peso



### Acabamentos

- .01 Branco / RAL 9010
- .02 Preto / RAL 9005

Para fornecimento específico de drivers "DALI 2" por favor contactar:  
[support@om-light.com](mailto:support@om-light.com)

Choose the length and layout of the system exactly as you want it, to  
model the right lighting functions for different tasks. For further  
information please contact: [support@om-light.com](mailto:support@om-light.com)