

Compatibility with other modules must be confirmed with support@om-light.com



Design: OM + Bartenbach GmbH

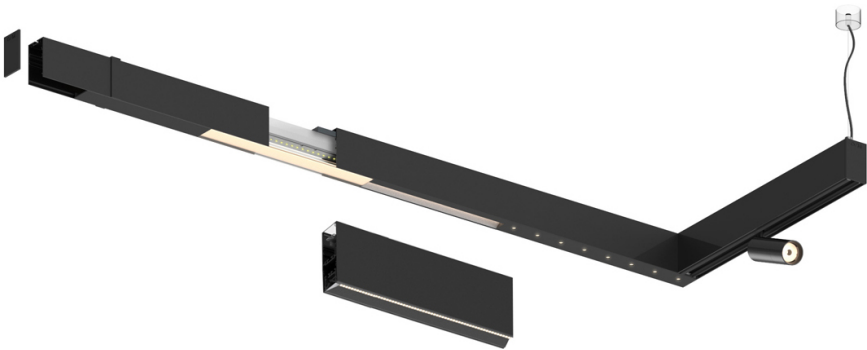
Module with linear extruded lenses (Lightstream) combined with a secondary reflector, integrated into an extruded aluminium profile.


LED CRI>90 / >50.000h, L80/B10 / 2-step MacAdam

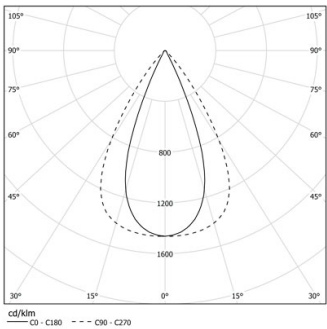
Fonte de alimentação incluída.

IP20 | 230Vac | 50/60Hz



	3000K	Fonte de Luz	Luminária
Potência	33W		39W
Fluxo	4200lm		3400lm
Eficiência	127lm/W		87lm/W
LOR	-		0.8100000000000001
UGR	-		<13



Ângulo de abertura
Flood 65°

Aplicação

Peso



Acabamentos

☐ .01 Branco / RAL 9010

☒ .02 Preto / RAL 9005

Para fornecimento específico de drivers "DALI 2" por favor contactar: support@om-light.com

Choose the length and layout of the system exactly as you want it, to model the right lighting functions for different tasks. For further information please contact: support@om-light.com

