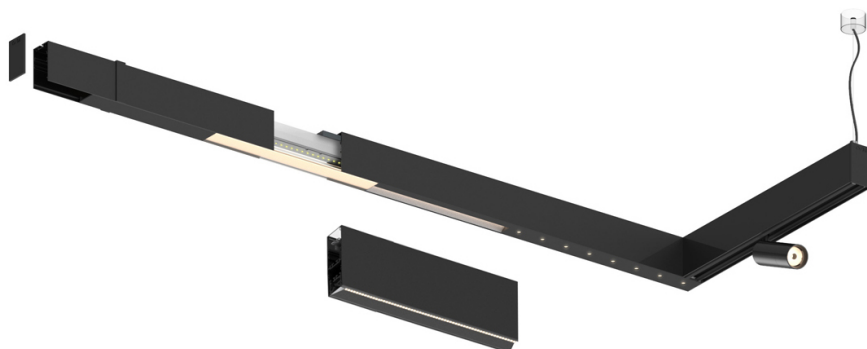


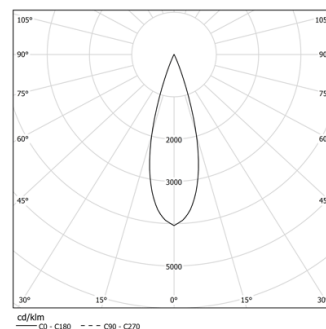
Design: O/M + Bartenbach GmbH

inVision module para Sys45 em alumínio com face
metálica perfurada e acabamento com pintura
texturada.

LED CRI>90 / >50.000h, L80/B10 / 2-step MacAdam
Fonte de alimentação incluída.
IP20 | 230Vac | 50/60Hz



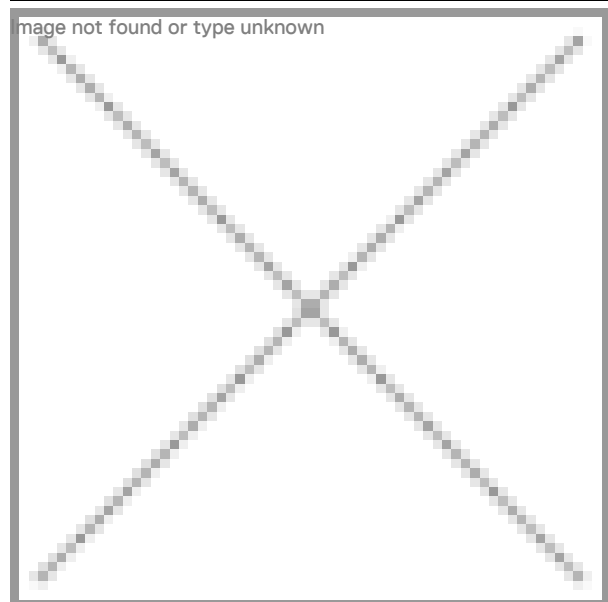
LED	2700K	Fonte de Luz	Luminária
Potência		27W	32W
Fluxo		2400lm	1760lm
Eficiência		89lm/W	55lm/W
LOR		-	73%
UGR		-	<10



Ângulo de abertura
Medium 30°

Aplicação

Peso



Acabamentos

- .01 Branco / RAL 9010
- .02 Preto / RAL 9005

Choose the length and layout of the system exactly as you want it, to
model the right lighting functions for different tasks. For further
information please contact: support@om-light.com
Para fornecimento específico de drivers "DALI 2" por favor contactar:
support@om-light.com