

16W* / 710lm* / 2200K-5000K / DALI /
Asymmetric / 600mm

61255

Compatibility with other modules must be confirmed
with support@om-light.com

Design: O/M + Bartenbach GmbH

Fonte de luz LED com elevada consistência

cromática e longa vida útil. Fonte de luz LED em
Tunable White.

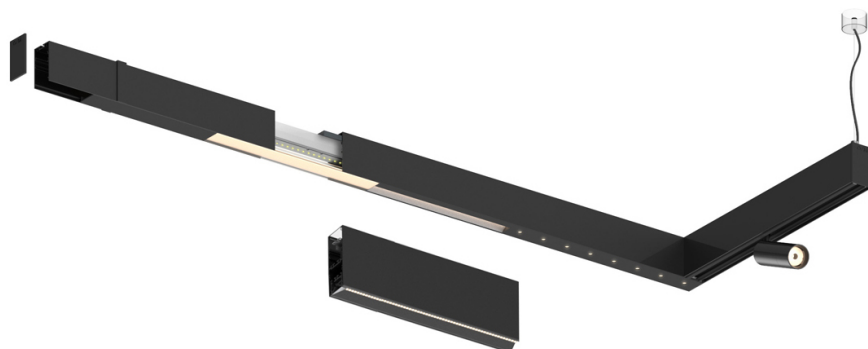
Refletor assimétrico em alumínio.

LED CRI>80 / >50.000h, L80/B10

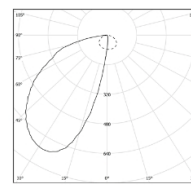
2-step MacAdam / fonte de alimentação incluída.

Driver DALI DT8

IP20 | 230Vac | 50/60Hz



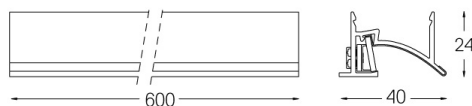
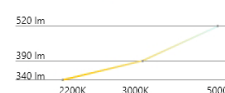
LED	2200K-5000K	Fonte de Luz	Luminária
Potência		16W*	19W*
Fluxo		1550lm*	710lm*
Eficiência		97lm/W	37lm/W
LOR		-	46%
UGR		-	-



Ângulo de abertura
Asymmetric

Aplicação

Peso



Acabamentos

- .01 Branco / RAL 9010
- .02 Preto / RAL 9005
- .03 Cinzento / RAL 9006

Choose the length and layout of the system exactly as you want it, to
model the right lighting functions for different tasks. For further
information please contact: support@om-light.com
Driver DALI DT8