

16W\* / 710lm\* / 2200K-5000K / DALI /  
Asymmetric / 600mm

61255

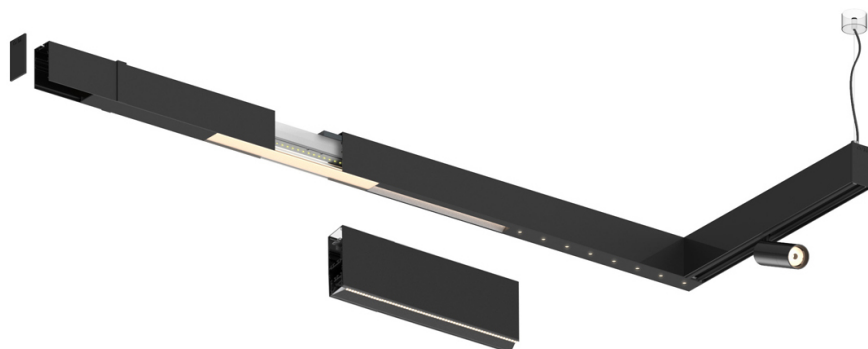
Compatibility with other modules must be confirmed  
with [support@om-light.com](mailto:support@om-light.com)

Design: O/M + Bartenbach GmbH

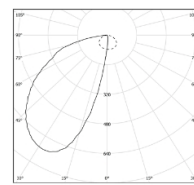
Fonte de luz LED com elevada consistência  
cromática e longa vida útil. Fonte de luz LED em  
Tunable White.

Refletor assimétrico em alumínio.

LED CRI>80 / >50.000h, L80/B10  
2-step MacAdam / fonte de alimentação incluída.  
Driver DALI DT8  
IP20 | 230Vac | 50/60Hz



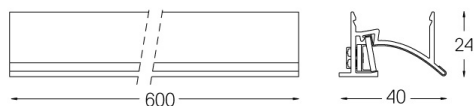
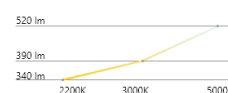
LED	2200K-5000K	Fonte de Luz	Luminária
Potência		16W*	19W*
Fluxo		1550lm*	710lm*
Eficiência		97lm/W	37lm/W
LOR		-	46%
UGR		-	-



Ângulo de abertura  
Asymmetric

Aplicação

Peso



#### Acabamentos

- .01 Branco / RAL 9010
- .02 Preto / RAL 9005
- .03 Cinzento / RAL 9006

Choose the length and layout of the system exactly as you want it, to  
model the right lighting functions for different tasks. For further  
information please contact: [support@om-light.com](mailto:support@om-light.com)  
Driver DALI DT8