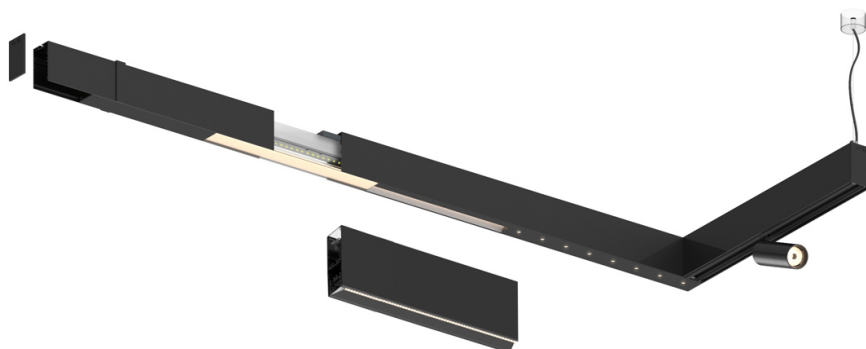


17W / 1800lm / 4000K / DALI / Wide flood
80° / 1440mm

61229

Compatibility with other modules must be confirmed
with support@om-light.comDesign: OM + Bartenbach
GmbHModule with linear extruded lenses (Lightstream)
combined with a secondary reflector, integrated into
an extruded aluminium profile.LED CRI>90 / >50.000h, L80/B10 / 2-step MacAdam
Fonte de alimentação incluída.
IP20 | 230Vac | 50/60Hz

LED	4000K	Fonte de Luz	Luminária
Potência		17W	20W
Fluxo		2250lm	1800lm
Eficiência		136lm/W	92lm/W
LOR		-	0.8
UGR		-	<19

Ângulo de abertura
Wide flood 80°

Aplicação

Peso



Acabamentos

- .01 Branco / RAL 9010
- .02 Preto / RAL 9005

Para fornecimento específico de drivers "DALI 2" por favor contactar:
support@om-light.comChoose the length and layout of the system exactly as you want it, to
model the right lighting functions for different tasks. For further
information please contact: support@om-light.com