

23W / 2600lm / 4000K / DALI / Flood 65° /
1440mm

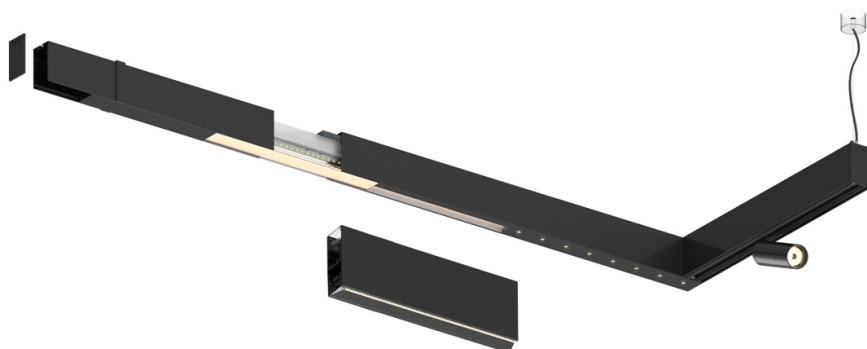
61228

Compatibility with other modules must be confirmed
with support@om-light.com

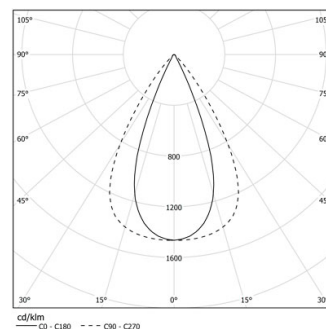
Design: OM + Bartenbach
GmbH

Module with linear extruded lenses (Lightstream)
combined with a secondary reflector, integrated into
an extruded aluminium profile.

LED CRI>90 / >50.000h, L80/B10 / 2-step MacAdam
Fonte de alimentação incluída.
IP20 | 230Vac | 50/60Hz



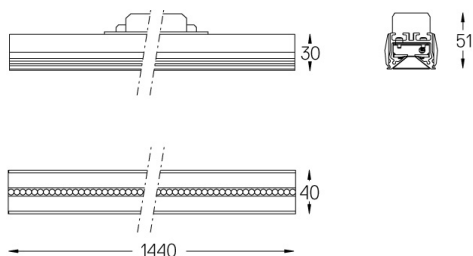
| LED | 4000K | Fonte de Luz | Luminária |
|------------|-------|--------------|-----------|
| Potência | | 23W | 27W |
| Fluxo | | 3250lm | 2600lm |
| Eficiência | | 141lm/W | 96lm/W |
| LOR | | - | 0.8 |
| UGR | | - | <16 |



Ângulo de abertura
Flood 65°

Aplicação

Peso



Acabamentos

- .01 Branco / RAL 9010
- .02 Preto / RAL 9005

Para fornecimento específico de drivers "DALI 2" por favor contactar:
support@om-light.com

Choose the length and layout of the system exactly as you want it, to
model the right lighting functions for different tasks. For further
information please contact: support@om-light.com