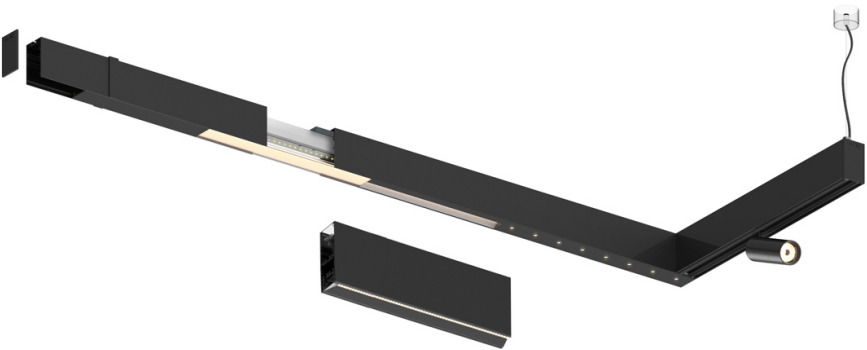


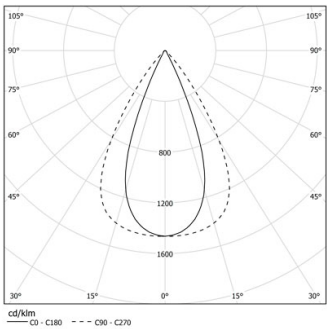
Compatibility with other modules must be confirmed with support@om-light.com

Design: OM + Bartenbach GmbH
Module with linear extruded lenses (Lightstream) combined with a secondary reflector, integrated into an extruded aluminium profile.

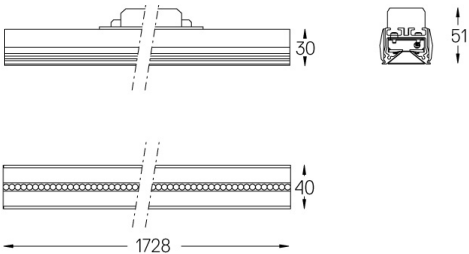
LED CRI>90 / >50.000h, L80/B10 / 2-step MacAdam
Fonte de alimentação incluída.
IP20 | 230Vac | 50/60Hz



LED	3000K	Fonte de Luz	Luminária
Potência	20W	24W	
Fluxo	2520lm	2040lm	
Eficiência	127lm/W	87lm/W	
LOR	-	0.8100000000000001	
UGR	-	<13	



Ângulo de abertura
Flood 65°
Aplicação
Peso



- Acabamentos
- .01 Branco / RAL 9010
 - .02 Preto / RAL 9005

Para fornecimento específico de drivers "DALI 2" por favor contactar: support@om-light.com

Choose the length and layout of the system exactly as you want it, to model the right lighting functions for different tasks. For further information please contact: support@om-light.com