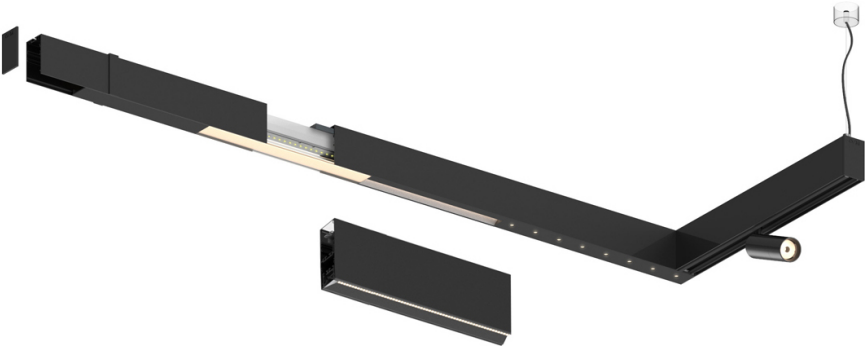


Compatibility with other modules must be confirmed with [support@om-light.com](mailto:support@om-light.com)

Design: OM + Bartenbach GmbH  
Module with linear extruded lenses (Lightstream) combined with a secondary reflector, integrated into an extruded aluminium profile.

LED CRI>90 / >50.000h, L80/B10 / 2-step MacAdam  
Fonte de alimentação incluída.  
IP20 | 230Vac | 50/60Hz



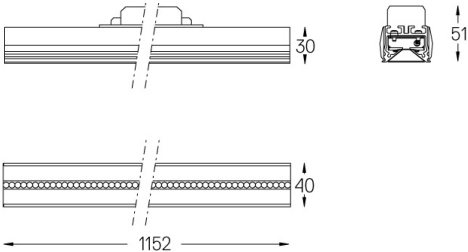
	3000K	Fonte de Luz	Luminária
Potência	14W		16W
Fluxo	1680lm		1360lm
Eficiência	127lm/W		87lm/W
LOR	-		0.8100000000000001
UGR	-		<19



Ângulo de abertura  
Wide flood 80°

Aplicação

Peso



- Acabamentos
- .01 Branco / RAL 9010
  - .02 Preto / RAL 9005

Para fornecimento específico de drivers "DALI 2" por favor contactar: [support@om-light.com](mailto:support@om-light.com)

Choose the length and layout of the system exactly as you want it, to model the right lighting functions for different tasks. For further information please contact: [support@om-light.com](mailto:support@om-light.com)