

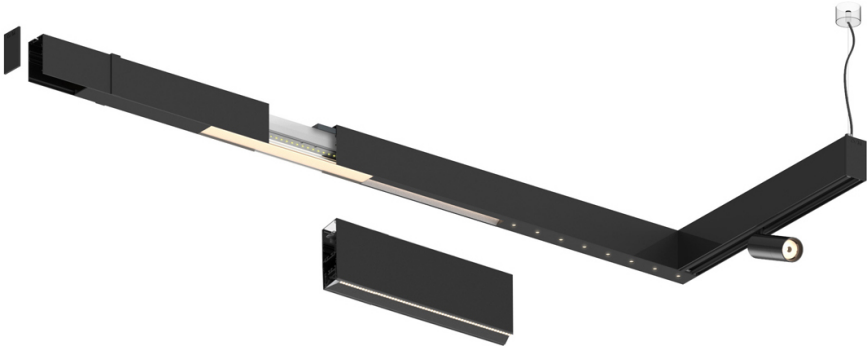
28W\* / 2900lm\* / 2200K-5000K / DALI /  
Wide flood 80° / 1459mm


61192

Compatibility with other modules must be confirmed  
with [support@om-light.com](mailto:support@om-light.com)

Design: OM + Bartenbach  
GmbH  
Module with linear extruded lenses (Lightstream)  
combined with a secondary reflector, integrated into  
an extruded aluminium profile.

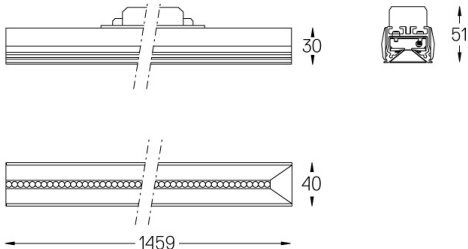
LED CRI>80 / >50.000h, L80/B10 / 2-step MacAdam  
Fonte de alimentação incluída.  
IP20 | 230Vac | 50/60Hz



|  LED | 2200K-5000K | Fonte de Luz       | Luminária |
|---|-------------|--------------------|-----------|
| Potência  | 28W*        | 33W*               |           |
| Fluxo   | 3650lm*     | 2900lm*            |           |
| Eficiência  | 120lm/W     | 85lm/W             |           |
| LOR   | -           | 0.8273381294964028 |           |
| UGR   | -           | <19                |           |



Ângulo de abertura  
Wide flood 80°  
  
Aplicação  
  
Peso



Acabamentos  
○ .01 Branco / RAL 9010  
● .02 Preto / RAL 9005

Para fornecimento específico de drivers "DALI 2" por favor contactar:  
[support@om-light.com](mailto:support@om-light.com)

Choose the length and layout of the system exactly as you want it, to  
model the right lighting functions for different tasks. For further  
information please contact: [support@om-light.com](mailto:support@om-light.com)