

28W* / 2900lm* / 2200K-5000K / DALI /
Wide flood 80° / 1459mm

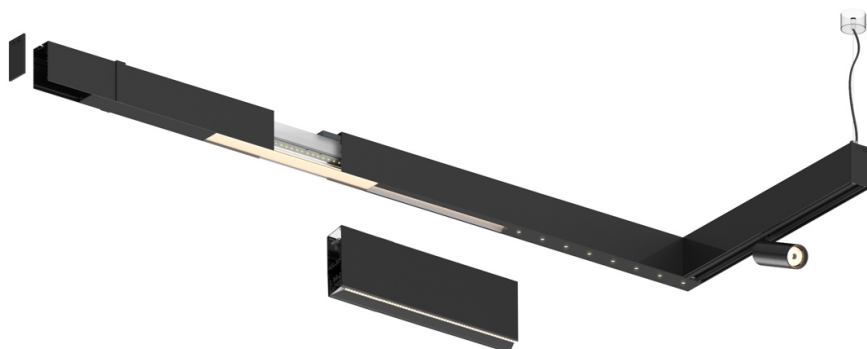
61192

Compatibility with other modules must be confirmed
with support@om-light.com

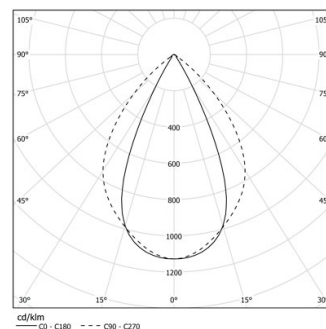
Design: OM + Bartenbach
GmbH

Module with linear extruded lenses (Lightstream)
combined with a secondary reflector, integrated into
an extruded aluminium profile.

LED CRI>80 / >50.000h, L80/B10 / 2-step MacAdam
Fonte de alimentação incluída.
IP20 | 230Vac | 50/60Hz



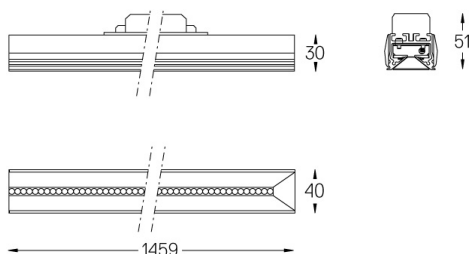
LED	2200K-5000K	Fonte de Luz	Luminária
Potência		28W*	33W*
Fluxo		3650lm*	2900lm*
Eficiência		120lm/W	85lm/W
LOR		-	0.8273381294964028
UGR		-	<19



Ângulo de abertura
Wide flood 80°

Aplicação

Peso



Acabamentos

- .01 Branco / RAL 9010
- .02 Preto / RAL 9005

Para fornecimento específico de drivers "DALI 2" por favor contactar:
support@om-light.com

Choose the length and layout of the system exactly as you want it, to
model the right lighting functions for different tasks. For further
information please contact: support@om-light.com