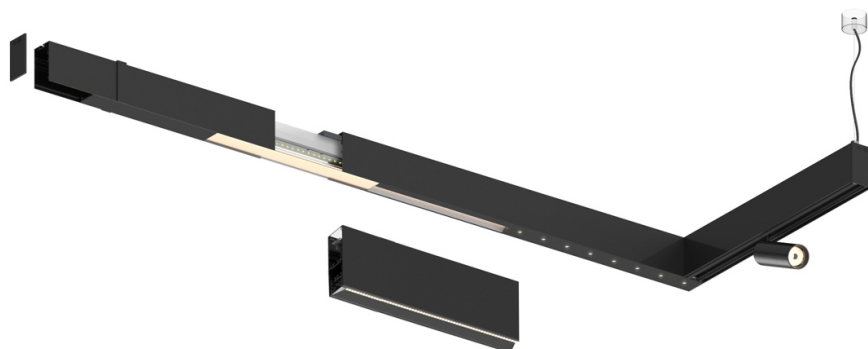

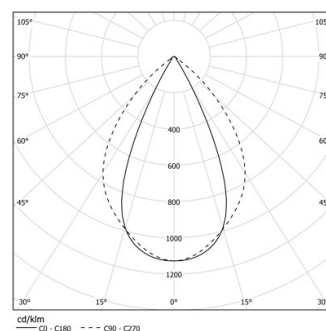


23W* / 2320lm* / 2200K-5000K / DALI /
Wide flood 80° / 1171mm

61190

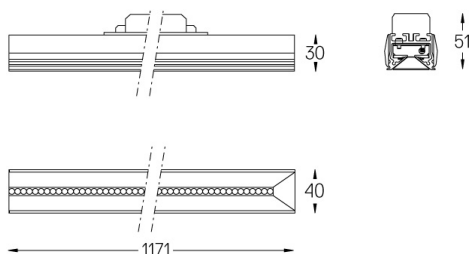
Compatibility with other modules must be confirmed
with support@om-light.comDesign: OM + Bartenbach
GmbHModule with linear extruded lenses (Lightstream)
combined with a secondary reflector, integrated into
an extruded aluminium profile.LED CRI>80 / >50.000h, L80/B10 / 2-step MacAdam
Fonte de alimentação incluída.
IP20 | 230Vac | 50/60Hz

 LED	2200K-5000K	Fonte de Luz	Luminária
Potência	23W*	27W*	
Fluxo	2920lm*	2320lm*	
Eficiência	120lm/W	85lm/W	
LOR	-	0.8273381294964028	
UGR	-	<19	

Ângulo de abertura
Wide flood 80°

Aplicação

Peso



Acabamentos

- .01 Branco / RAL 9010
- .02 Preto / RAL 9005

Para fornecimento específico de drivers "DALI 2" por favor contactar:
support@om-light.comChoose the length and layout of the system exactly as you want it, to
model the right lighting functions for different tasks. For further
information please contact: support@om-light.com