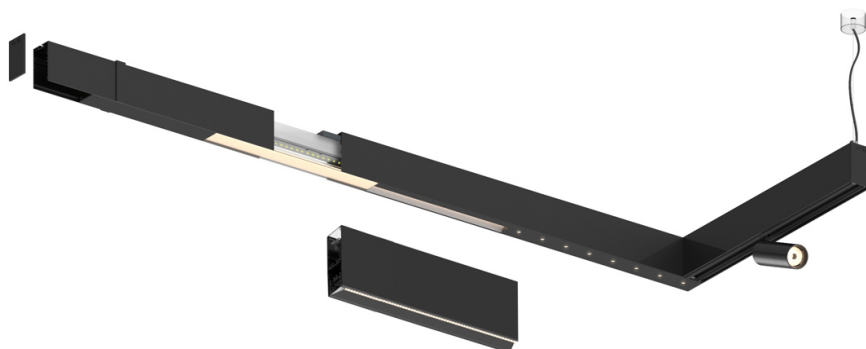


27W / 2750lm / 3000K / DALI / Wide flood
80° / 1459mm

61162

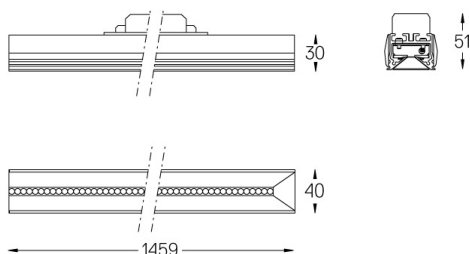
Compatibility with other modules must be confirmed
with support@om-light.comDesign: OM + Bartenbach
GmbHModule with linear extruded lenses (Lightstream)
combined with a secondary reflector, integrated into
an extruded aluminium profile.LED CRI>90 / >50.000h, L80/B10 / 2-step MacAdam
Fonte de alimentação incluída.
IP20 | 230Vac | 50/60Hz

| LED | 3000K | Fonte de Luz | Luminária |
|------------|-------|--------------|-----------|
| Potência | | 27W | 31W |
| Fluxo | | 3450lm | 2750lm |
| Eficiência | | 130lm/W | 89lm/W |
| LOR | | - | 0.8 |
| UGR | | - | <19 |

Ângulo de abertura
Wide flood 80°

Aplicação

Peso



Acabamentos

- .01 Branco / RAL 9010
- .02 Preto / RAL 9005

Para fornecimento específico de drivers "DALI 2" por favor contactar:
support@om-light.comChoose the length and layout of the system exactly as you want it, to
model the right lighting functions for different tasks. For further
information please contact: support@om-light.com