

17W / 1700lm / 3000K / DALI / Wide flood  
80° / 1459mm

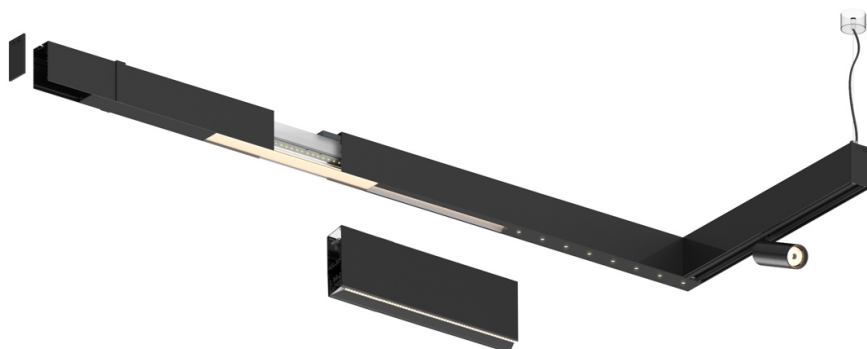
61161

Compatibility with other modules must be confirmed  
with [support@om-light.com](mailto:support@om-light.com)

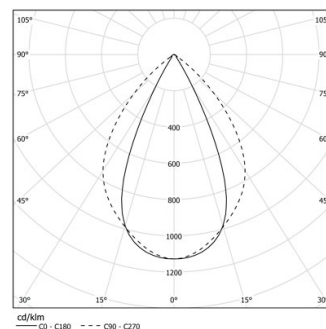
Design: OM + Bartenbach  
GmbH

Module with linear extruded lenses (Lightstream)  
combined with a secondary reflector, integrated into  
an extruded aluminium profile.

LED CRI>90 / >50.000h, L80/B10 / 2-step MacAdam  
Fonte de alimentação incluída.  
IP20 | 230Vac | 50/60Hz



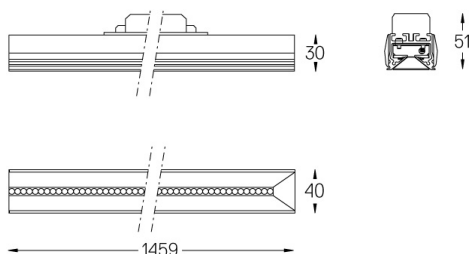
| LED        | 3000K   | Fonte de Luz       | Luminária |
|------------|---------|--------------------|-----------|
| Potência   | 17W     | 20W                |           |
| Fluxo      | 2100lm  | 1700lm             |           |
| Eficiência | 127lm/W | 87lm/W             |           |
| LOR        | -       | 0.8100000000000001 |           |
| UGR        | -       | <19                |           |



Ângulo de abertura  
Wide flood 80°

Aplicação

Peso



### Acabamentos

- .01 Branco / RAL 9010
- .02 Preto / RAL 9005

Para fornecimento específico de drivers "DALI 2" por favor contactar:  
[support@om-light.com](mailto:support@om-light.com)

Choose the length and layout of the system exactly as you want it, to  
model the right lighting functions for different tasks. For further  
information please contact: [support@om-light.com](mailto:support@om-light.com)