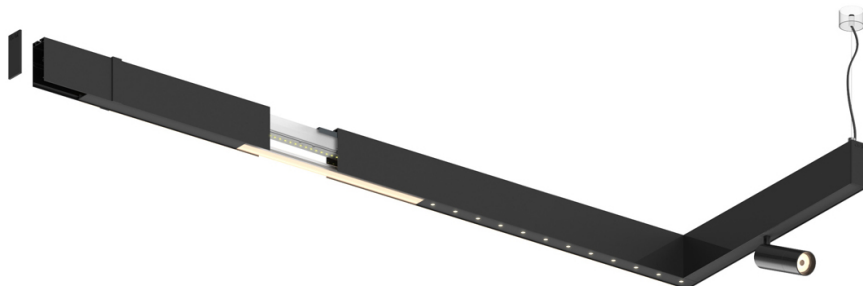


52W / 3480lm / 2700K / DALI / Medium 30° /
1200mm

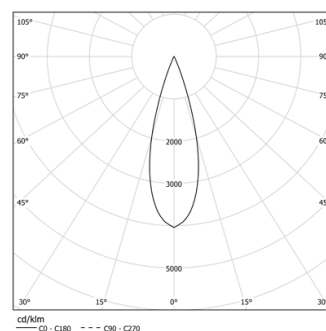
60947

Design: O/M + Bartenbach GmbH
Módulo inVision em alumínio com face metálica
perfurada e acabamento com pintura texturada.

LED CRI>90 / >50.000h, L80/B10 / 2-step MacAdam
Fonte de alimentação incluída.
IP20 | 230Vac | 50/60Hz



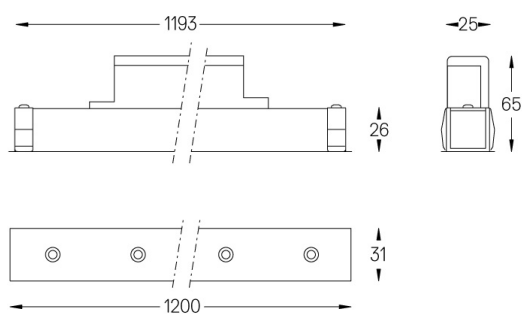
LED	2700K	Fonte de Luz	Luminária
Potência		52W	64W
Fluxo		4800lm	3480lm
Eficiência		92lm/W	54lm/W
LOR		-	0.725
UGR		-	<13



Ângulo de abertura
Medium 30°

Aplicação

Peso
0,8Kg



Acabamentos

- .01 Branco / RAL 9010
- .02 Preto / RAL 9005

Para fornecimento específico de drivers "DALI 2" por favor contactar:
support@om-light.com

Choose the length and layout of the system exactly as you want it, to
model the right lighting functions for different tasks. For further
information please contact: support@om-light.com