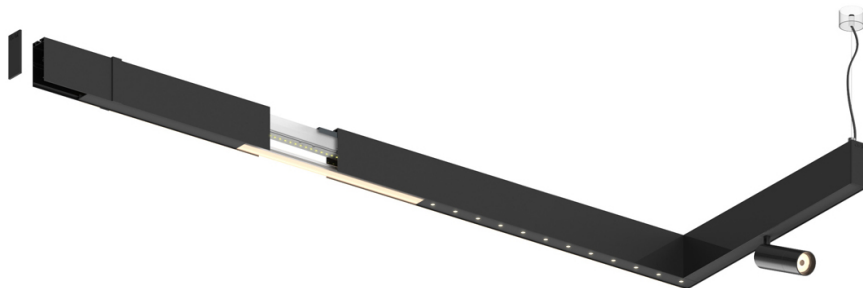
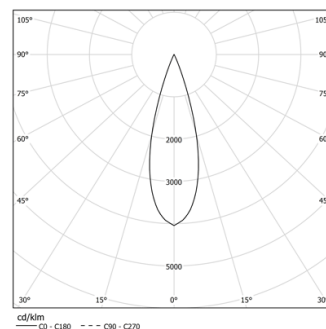


Design: O/M + Bartenbach GmbH  
Módulo inVision em alumínio com face metálica  
perfurada e acabamento com pintura texturada.

LED CRI>90 / >50.000h, L80/B10 / 2-step MacAdam  
Fonte de alimentação incluída.  
IP20 | 230Vac | 50/60Hz



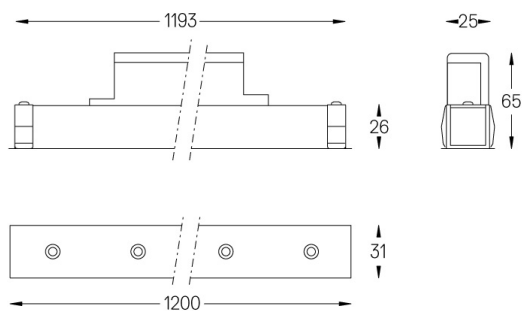
LED	2700K	Fonte de Luz	Luminária
Potência	27W		32W
Fluxo	2400lm		1760lm
Eficiência	89lm/W		55lm/W
LOR	-		0.7333333333333333
UGR	-		<10



Ângulo de abertura  
Medium 30°

Aplicação

Peso  
0,8Kg



#### Acabamentos

- .01 Branco / RAL 9010
- .02 Preto / RAL 9005

Para fornecimento específico de drivers "DALI 2" por favor contactar:  
support@om-light.com

Choose the length and layout of the system exactly as you want it, to  
model the right lighting functions for different tasks. For further  
information please contact: support@om-light.com