

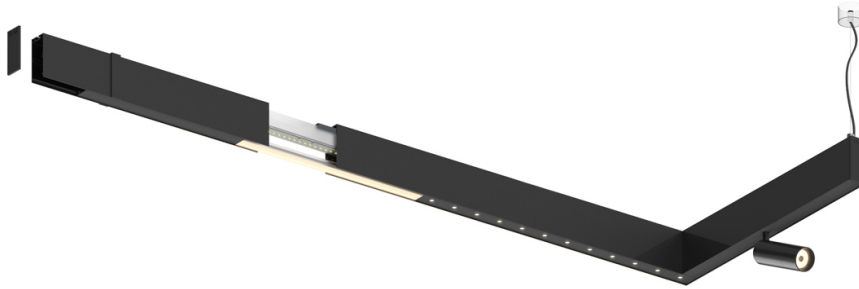
Sys35 inVision module


26W / 1820lm / 2700K / DALI / Flood 50° /
600mm

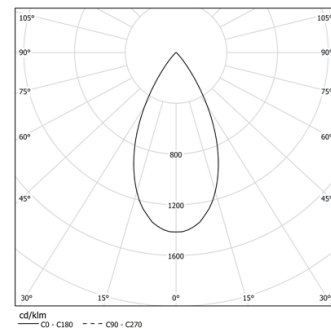
60945

Design: O/M + Bartenbach GmbH
Módulo inVision em alumínio com face metálica
perfurada e acabamento com pintura texturada.

LED CRI>90 / >50.000h, L80/B10 / 2-step MacAdam
Fonte de alimentação incluída.
IP20 | 230Vac | 50/60Hz



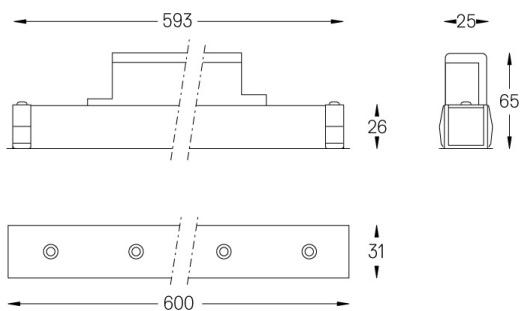
 LED	2700K	Fonte de Luz	Luminária
Potência	26W	32W	
Fluxo	2400lm	1820lm	
Eficiência	92lm/W	57lm/W	
LOR	-	0.7583333333333333	
UGR	-	<16	



Ângulo de abertura
Flood 50°

Aplicação

Peso
0,5Kg



Acabamentos

- ☐ .01 Branco / RAL 9010
- ☒ .02 Preto / RAL 9005

Para fornecimento específico de drivers "DALI 2" por favor contactar:
support@om-light.com

Choose the length and layout of the system exactly as you want it, to model the right lighting functions for different tasks. For further information please contact: support@om-light.com