

46W / 5200lm / 4000K / DALI / Flood 65° /  
2899mm

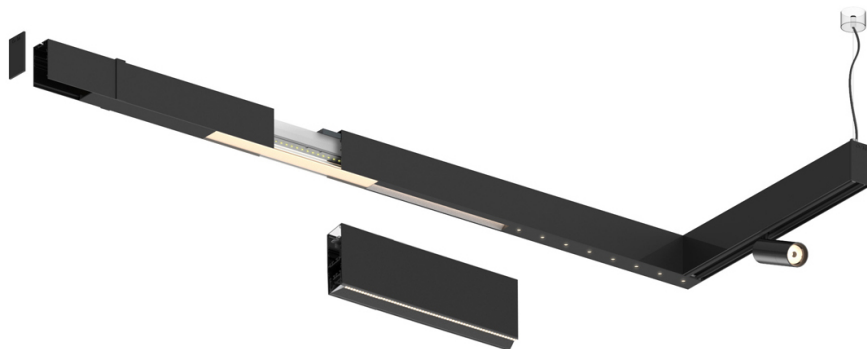
63161

Design: O/M + Bartenbach GmbH

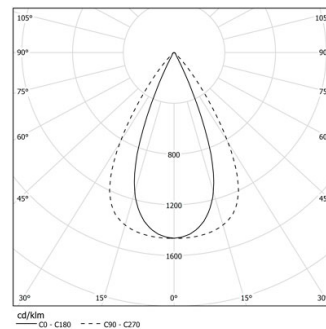
LED CRI>90 / >50.000h, L80/B10 / 2-step MacAdam

Power supply included.

IP20 | 230Vac | 50/60Hz



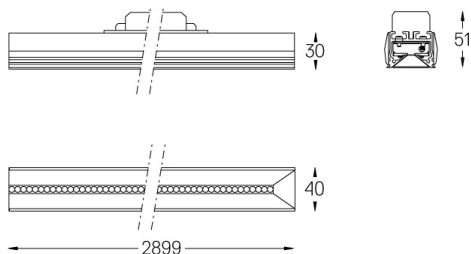
LED	4000K	Source lumineuse	Luminaire
Puissance	46W		54W
Flux	6500lm		5200lm
Efficacité	141lm/W		96lm/W
LOR	-		0.8
UGR	-		<16



Angle du faisceau  
Flood 65°

Application

Poids



Finitions

○ .01 Blanc / RAL 9010

● .02 Noir / RAL 9005