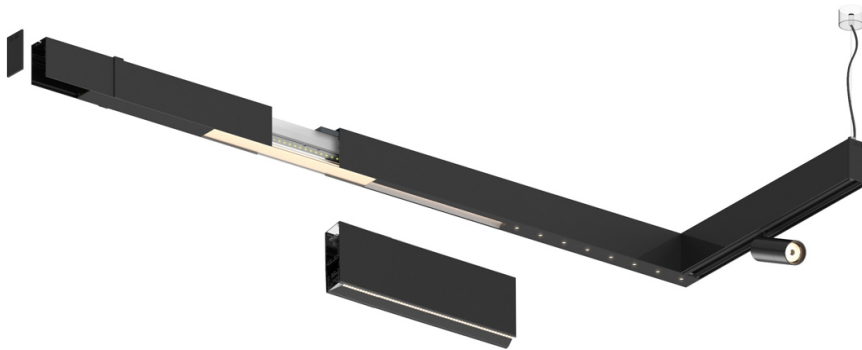


43W / 4400lm / 3000K / DALI / Wide flood
80° / 2323mm

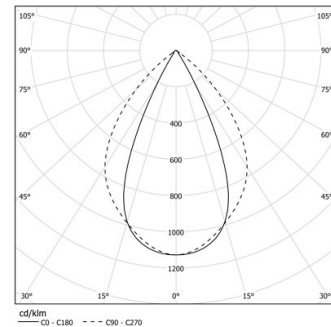
63151

Design: O/M + Bartenbach GmbH

LED CRI>90 / >50.000h, L80/B10 / 2-step MacAdam
Power supply included.
IP20 | 230Vac | 50/60Hz



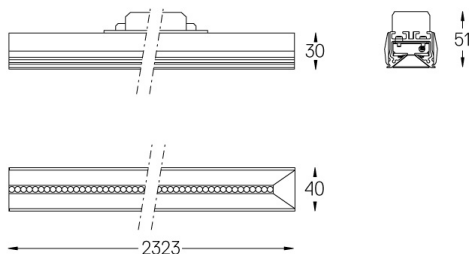
LED	3000K	Source lumineuse	Luminaire
Puissance	43W		50W
Flux	5520lm		4400lm
Efficacité	130lm/W		89lm/W
LOR	-		0.8
UGR	-		<19



Angle du faisceau
Wide flood 80°

Application

Poids



Finitions

- .01 Blanc / RAL 9010
- .02 Noir / RAL 9005