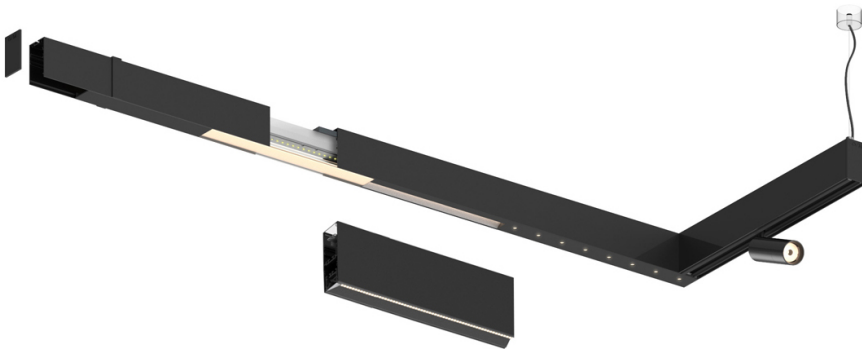


32W / 2050lm / 4000K / DALI / Asymmetric /
1200mm

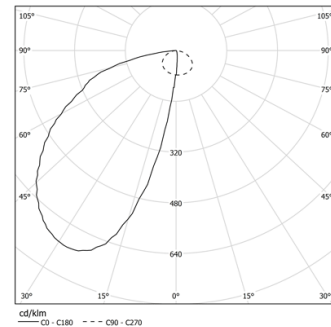
61254

Design: O/M + Bartenbach GmbH

LED CRI>80 / >50.000h, L80/B10
2-step MacAdam / power supply included.
IP20 | 230Vac | 50/60Hz



LED	4000K	Source lumineuse	Luminaire
Puissance	32W		38W
Flux	4480lm		2050lm
Efficacité	140lm/W		54lm/W
LOR	-		46%
UGR	-		-



Angle du faisceau
Asymmetric

Application

Poids



Finitions

- .01 Blanc / RAL 9010
- .02 Noir / RAL 9005
- .03 Gris / RAL 9006

