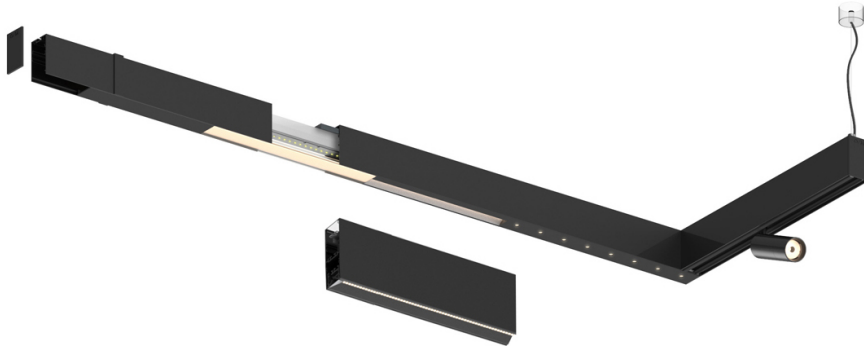


27W / 3000lm / 4000K / DALI / Wide flood
80° / 1440mm

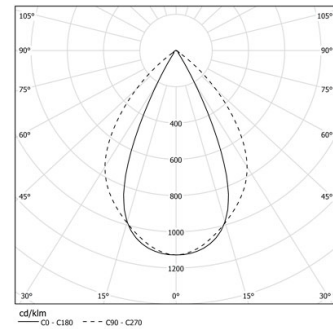
61230

Design: O/M + Bartenbach GmbH

LED CRI>90 / >50.000h, L80/B10 / 2-step MacAdam
Power supply included.
IP20 | 230Vac | 50/60Hz



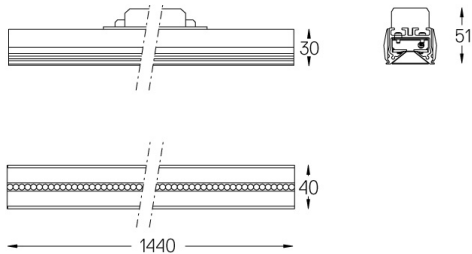
LED	4000K	Source lumineuse	Luminaire
Puissance		27W	31W
Flux		3750lm	3000lm
Efficacité		142lm/W	97lm/W
LOR		-	0.8
UGR		-	<19



Angle du faisceau
Wide flood 80°

Application

Poids



Finitions

- .01 Blanc / RAL 9010
- .02 Noir / RAL 9005