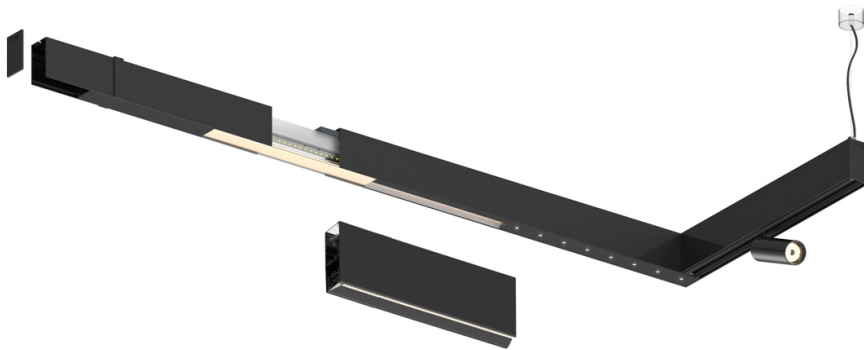


17W / 1700lm / 3000K / DALI / Flood 65° /  
1440mm

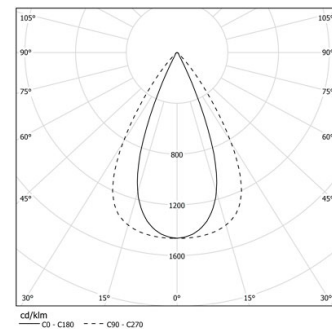
61207

Design: O/M + Bartenbach GmbH

LED CRI>90 / >50.000h, L80/B10 / 2-step MacAdam  
Power supply included.  
IP20 | 230Vac | 50/60Hz



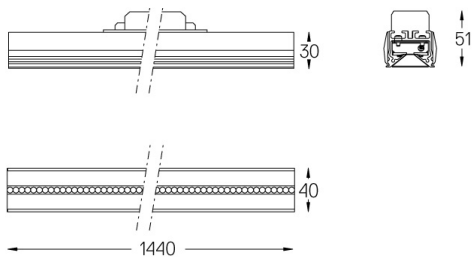
LED	3000K	Source lumineuse	Luminaire
Puissance	17W		20W
Flux	2100lm		1700lm
Efficacité	127lm/W		87lm/W
LOR	-		0.8100000000000001
UGR	-		<13



Angle du faisceau  
Flood 65°

Application

Poids



Finitions

- .01 Blanc / RAL 9010
- .02 Noir / RAL 9005