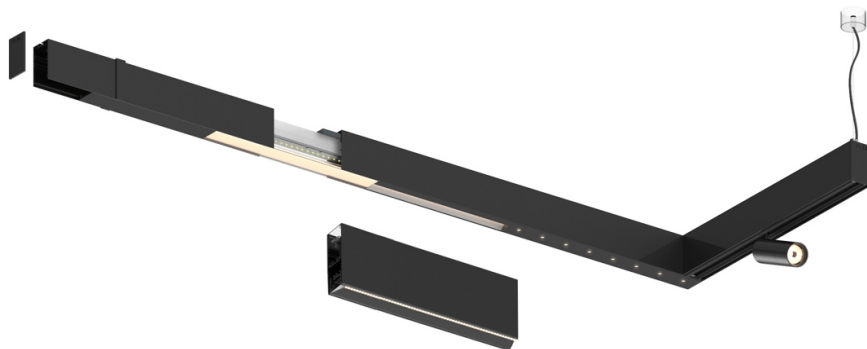
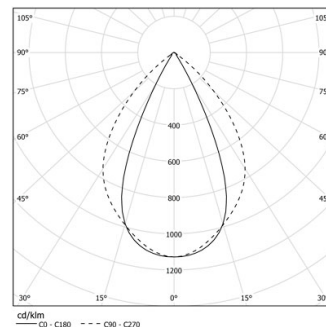


Design: O/M + Bartenbach GmbH

LED CRI>80 / >50.000h, L80/B10 / 2-step MacAdam  
Power supply included.  
IP20 | 230Vac | 50/60Hz



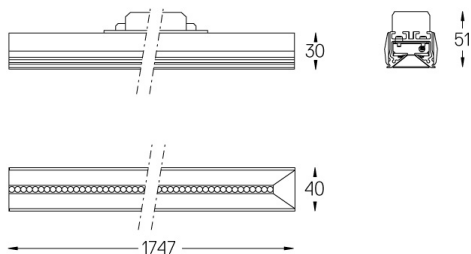
LED	2200K-5000K	Source lumineuse	Luminaire
Puissance	34W <sup>+</sup>		40W <sup>*</sup>
Flux	4380lm <sup>*</sup>		3480lm <sup>*</sup>
Efficacité	120lm/W		85lm/W
LOR	-		0.8273381294964028
UGR	-		<19



Angle du faisceau  
Wide flood 80°

Application

Poids



### Finitions

- .01 Blanc / RAL 9010
- .02 Noir / RAL 9005