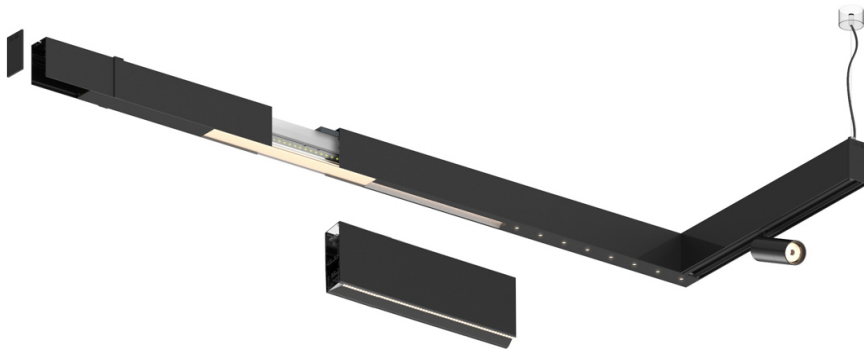


34W* / 3480lm* / 2200K-5000K / DALI /
Flood 65° / 1747mm

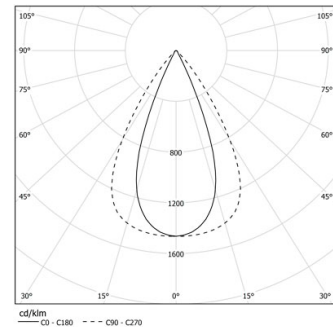
61193

Design: O/M + Bartenbach GmbH

LED CRI>80 / >50.000h, L80/B10 / 2-step MacAdam
Power supply included.
IP20 | 230Vac | 50/60Hz



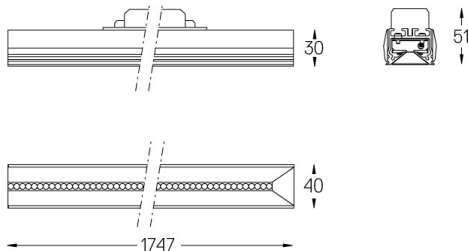
LED	2200K-5000K	Source lumineuse	Luminaire
Puissance	34W*	40W*	40W*
Flux	4380lm*	3480lm*	3480lm*
Efficacité	120lm/W	85lm/W	85lm/W
LOR	-	0.8273381294964028	0.8273381294964028
UGR	-	<13	<13



Angle du faisceau
Flood 65°

Application

Poids



Finitions

- .01 Blanc / RAL 9010
- .02 Noir / RAL 9005