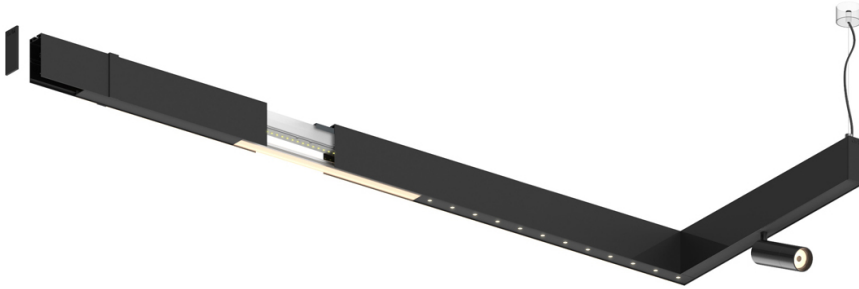


26W / 1820lm / 2700K / DALI / Flood 50° /
600mm

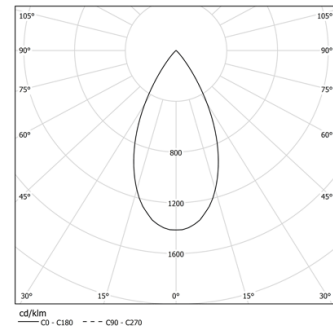
60945

Design: O/M + Bartenbach GmbH

LED CRI>90 / >50.000h, L80/B10
2-step MacAdam / power supply included.
IP20 | 230Vac | 50/60Hz



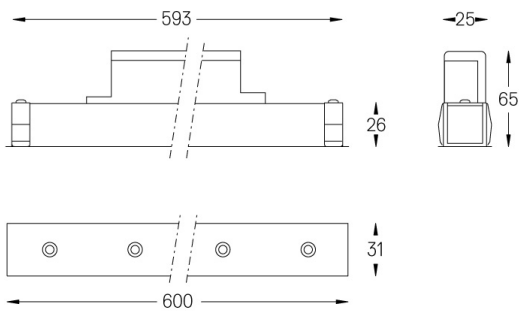
LED	2700K	Source lumineuse	Luminaire
Puissance	26W		32W
Flux	2400lm		1820lm
Efficacité	92lm/W		57lm/W
LOR	-		0.7583333333333333
UGR	-		<16



Angle du faisceau
Flood 50°

Application

Poids
0,5Kg



Finitions

- .01 Blanc / RAL 9010
- .02 Noir / RAL 9005