

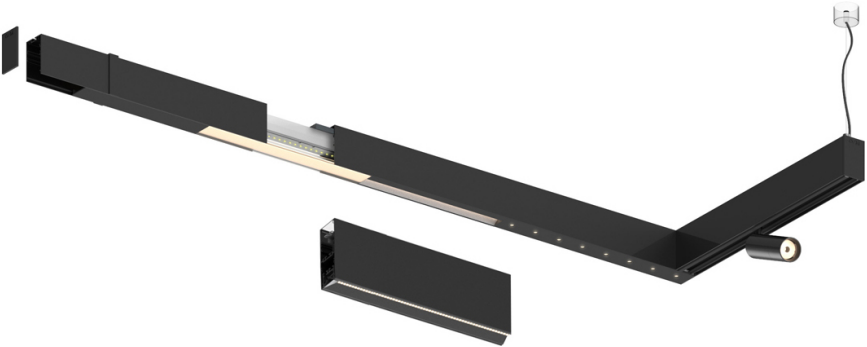



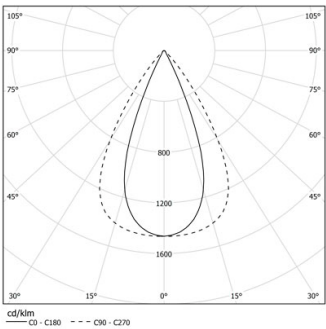
Design: O/M + Bartenbach GmbH

LED CRI>90 / >50.000h, L80/B10 / 2-step MacAdam  
Power supply included.  
IP20 | 230Vac | 50/60Hz



|   |                  |                    |
|---|------------------|--------------------|
|  3000K | Source lumineuse | Luminaire          |
| Puissance   | 33W              | 39W                |
| Flux  | 4200lm           | 3400lm             |
| Efficacité  | 127lm/W          | 87lm/W             |
| LOR   | -                | 0.8100000000000001 |
| UGR   | -                | <13                |




Angle du faisceau  
Flood 65°


Application

Poids



Finitions

 .01 Blanc / RAL 9010

 .02 Noir / RAL 9005

