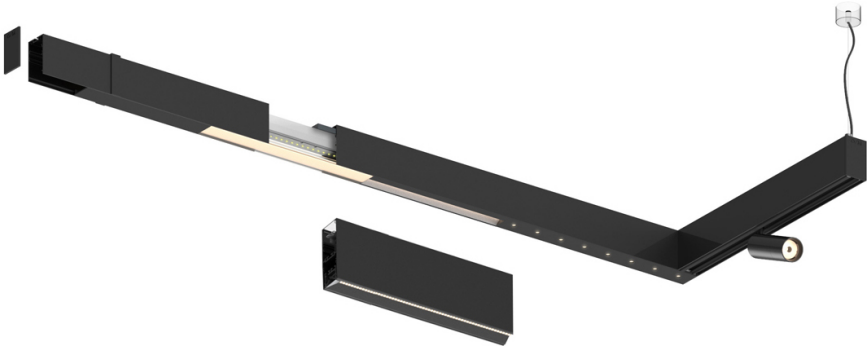

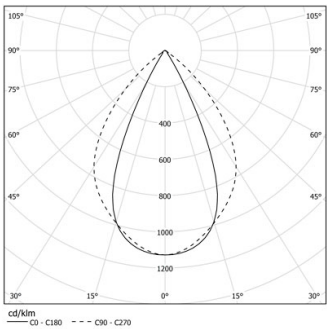


Design: O/M + Bartenbach GmbH

LED CRI>90 / >50.000h, L80/B10 / 2-step MacAdam  
Power supply included.  
IP20 | 230Vac | 50/60Hz



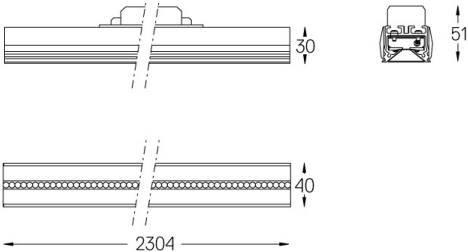
 <b>3000K</b>	<b>Source lumineuse</b>	<b>Luminaire</b>
<b>Puissance</b>	<b>43W</b>	<b>50W</b>
<b>Flux</b>	<b>5520lm</b>	<b>4400lm</b>
<b>Efficacité</b>	<b>130lm/W</b>	<b>89lm/W</b>
<b>LOR</b>	-	<b>0.8</b>
<b>UGR</b>	-	<b>&lt;19</b>



Angle du faisceau  
Wide flood 80°

Application

Poids



Finitions

- .01 Blanc / RAL 9010
- .02 Noir / RAL 9005