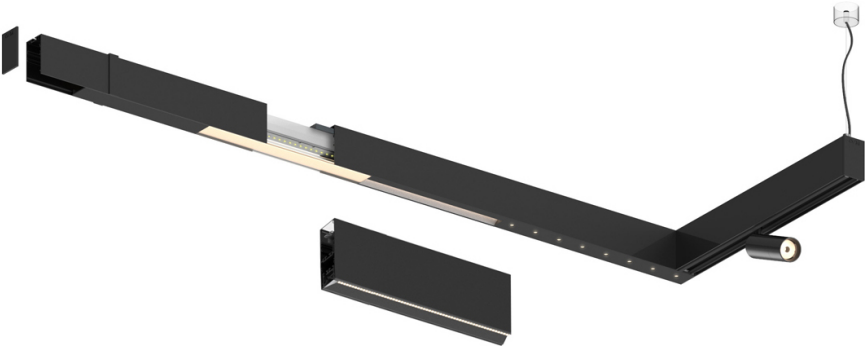



Design: O/M + Bartenbach GmbH

LED CRI>90 / >50.000h, L80/B10 / 2-step MacAdam
Power supply included.
IP20 | 230Vac | 50/60Hz



 4000K	Source lumineuse	Luminaire
Puissance	33W	39W
Flux	4500lm	3600lm
Efficacité	136lm/W	92lm/W
LOR	-	0.8
UGR	-	<13



Angle du faisceau
Flood 65°

Application

Poids



Finitions

○ .01 Blanc / RAL 9010

● .02 Noir / RAL 9005

