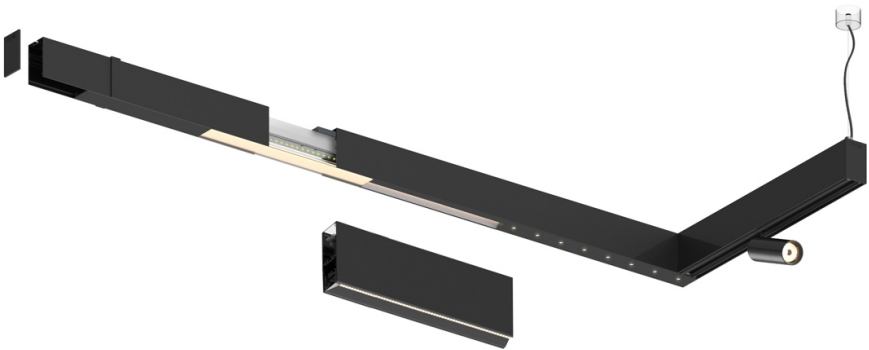

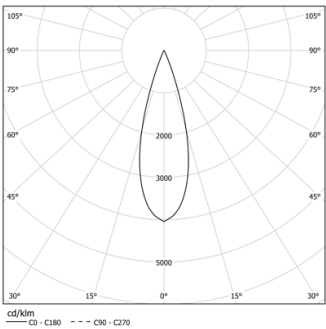


Design: O/M + Bartenbach GmbH

LED CRI>90 / >50.000h, L80/B10 / 2-step MacAdam  
Power supply included.  
IP20 | 230Vac | 50/60Hz



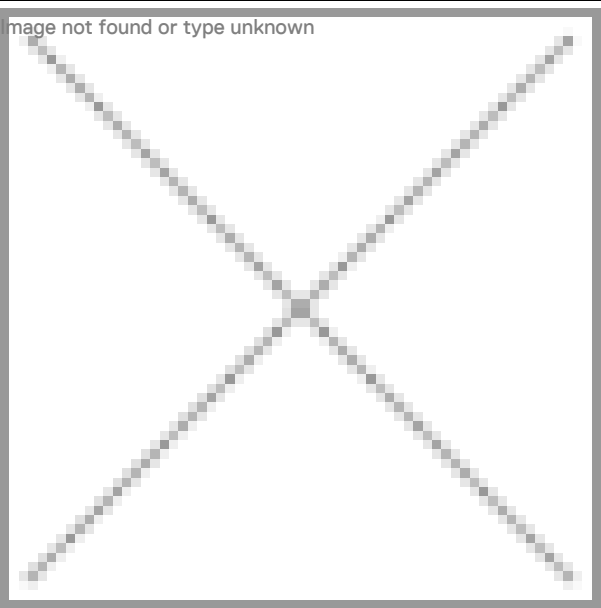
 2700K	Source lumineuse	Luminaire
Puissance	52W	64W
Flux	4800lm	3480lm
Efficacité	92lm/W	54lm/W
LOR	-	73%
UGR	-	<13



Angle du faisceau  
Medium 30°

Application

Poids



Finitions

- .01 Blanc / RAL 9010
- .02 Noir / RAL 9005