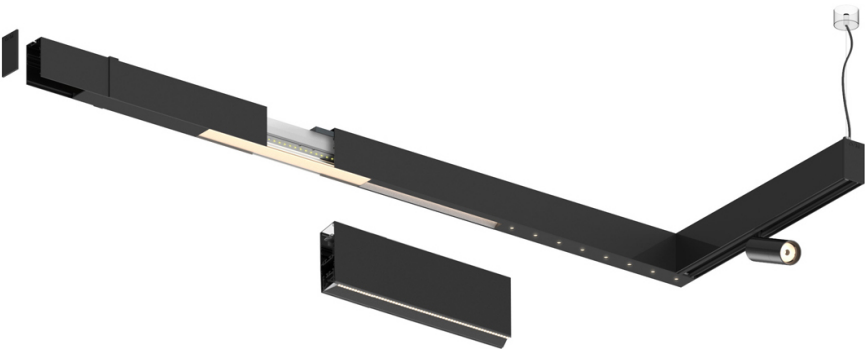
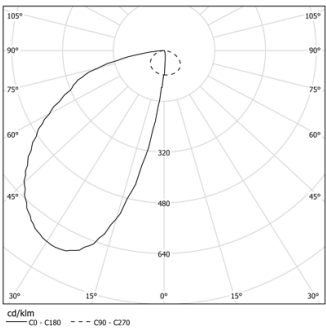


Design: O/M + Bartenbach GmbH

LED CRI>80 / >50.000h, L80/B10
2-step MacAdam / power supply included.
IP20 | 230Vac | 50/60Hz



LED	4000K	Source lumineuse	Luminaire
Puissance		32W	38W
Flux		4480lm	2050lm
Efficacité		140lm/W	54lm/W
LOR		-	46%
UGR		-	-



Angle du faisceau
Asymmetric

Application

Poids



Finitions

- .01 Blanc / RAL 9010
- .02 Noir / RAL 9005
- .03 Gris / RAL 9006

