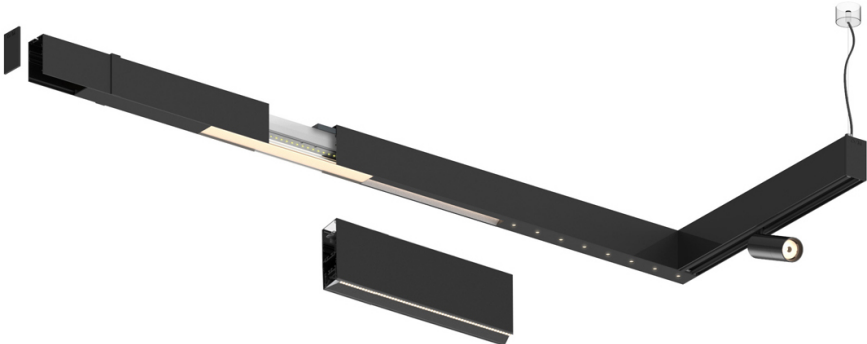

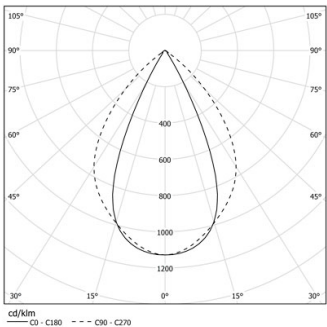


Design: O/M + Bartenbach GmbH

LED CRI>90 / >50.000h, L80/B10 / 2-step MacAdam
Power supply included.
IP20 | 230Vac | 50/60Hz



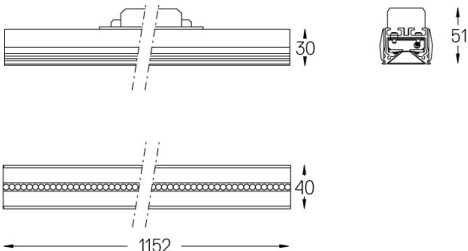
 4000K	Source lumineuse	Luminaire
Puissance	14W	16W
Flux	1800lm	1440lm
Efficacité	136lm/W	92lm/W
LOR	-	0.8
UGR	-	<19



Angle du faisceau
Wide flood 80°

Application

Poids



Finitions

- ☐ .01 Blanc / RAL 9010
- ☒ .02 Noir / RAL 9005