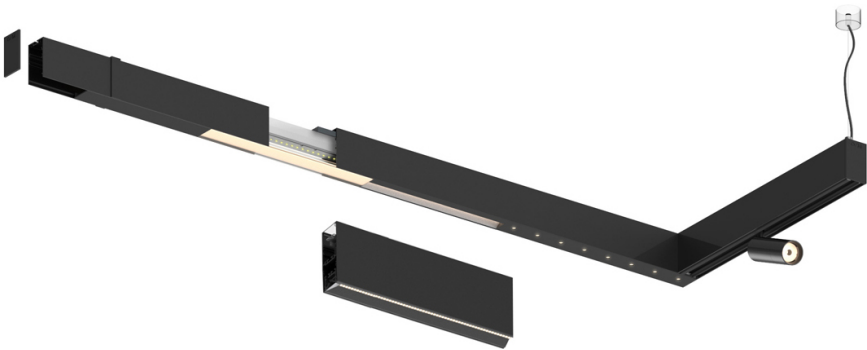



Design: O/M + Bartenbach GmbH

LED CRI>90 / >50.000h, L80/B10 / 2-step MacAdam
Power supply included.
IP20 | 230Vac | 50/60Hz



 3000K	Source lumineuse	Luminaire
Puissance	17W	20W
Flux	2100lm	1700lm
Efficacité	127lm/W	87lm/W
LOR	-	0.8100000000000001
UGR	-	<13




Angle du faisceau
Flood 65°


Application

Poids



Finitions

 .01 Blanc / RAL 9010

 .02 Noir / RAL 9005

