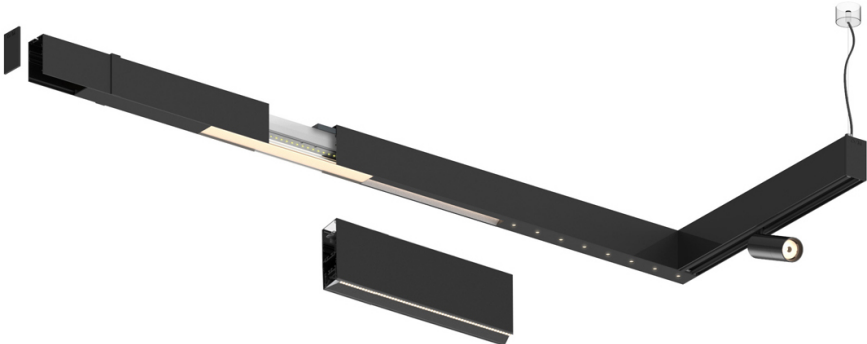


Design: O/M + Bartenbach GmbH

LED CRI>90 / >50.000h, L80/B10 / 2-step MacAdam
Power supply included.
IP20 | 230Vac | 50/60Hz



LED	4000K	Source lumineuse	Luminaire
Puissance		17W	20W
Flux		2250lm	1800lm
Efficacité		136lm/W	92lm/W
LOR		-	0.8
UGR		-	<19



Angle du faisceau
Wide flood 80°

Application

Poids



Finitions

- .01 Blanc / RAL 9010
- .02 Noir / RAL 9005

