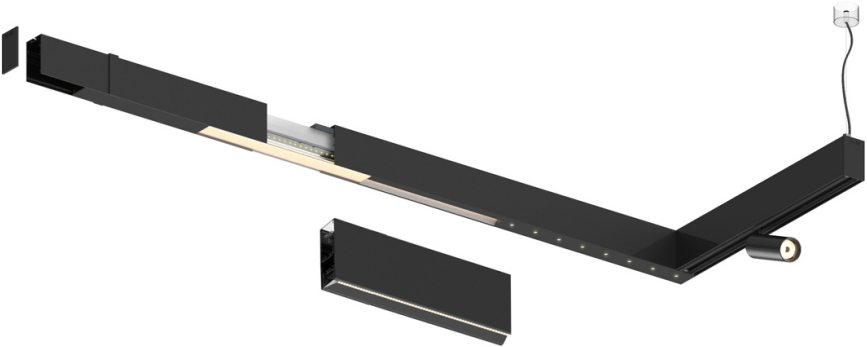


Design: O/M + Bartenbach GmbH

LED CRI>90 / >50.000h, L80/B10 / 2-step MacAdam  
Power supply included.  
IP20 | 230Vac | 50/60Hz



|            |         |                  |                    |
|------------|---------|------------------|--------------------|
|            | 3000K   | Source lumineuse | Luminaire          |
| Puissance  | 17W     |                  | 20W                |
| Flux       | 2100lm  |                  | 1700lm             |
| Efficacité | 127lm/W |                  | 87lm/W             |
| LOR        | -       |                  | 0.8100000000000001 |
| UGR        | -       |                  | <19                |



Angle du faisceau  
Wide flood 80°

Application

Poids



Finitions

○ .01 Blanc / RAL 9010

● .02 Noir / RAL 9005

