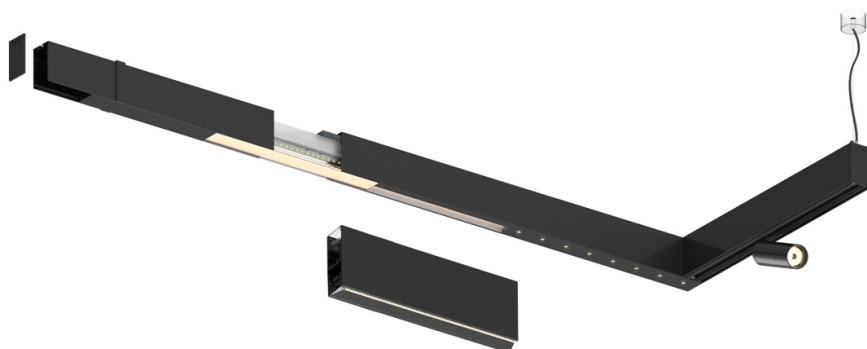


Design: O/M + Bartenbach GmbH

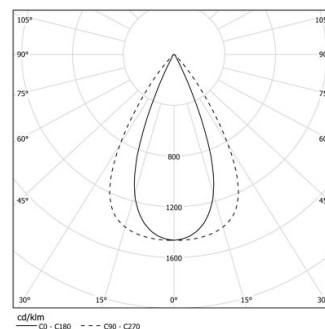
LED CRI&gt;90 / &gt;50.000h, L80/B10 / 2-step MacAdam

Power supply included.

IP20 | 230Vac | 50/60Hz



LED	3000K	Source lumineuse	Luminaire
Puissance		19W	22W
Flux		2400lm	1920lm
Efficacité		130lm/W	89lm/W
LOR		-	0.8
UGR		-	<16

Angle du faisceau  
Flood 65°

Application

Poids



## Finitions

- .01 Blanc / RAL 9010
- .02 Noir / RAL 9005

