

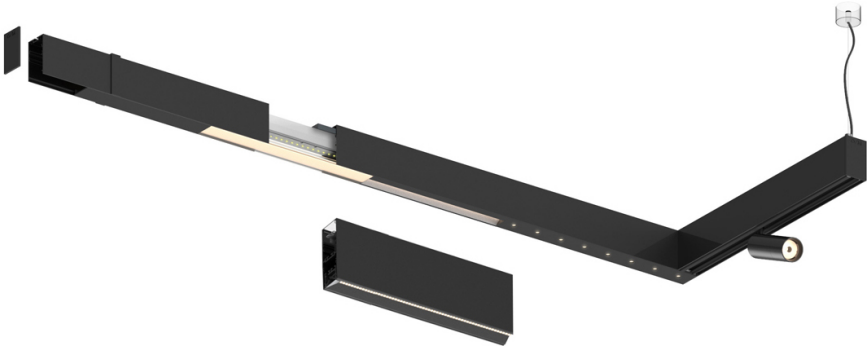



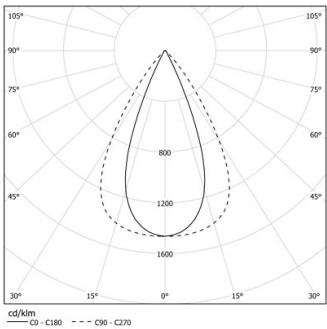
Design: O/M + Bartenbach GmbH

LED CRI>90 / >50.000h, L80/B10 / 2-step MacAdam  
Power supply included.  
IP20 | 230Vac | 50/60Hz



 3000K	Source lumineuse	Luminaire
Puissance	19W	22W
Flux	2400lm	1920lm
Efficacité	130lm/W	89lm/W
LOR	-	0.8
UGR	-	<16





Angle du faisceau  
Flood 65°

Application

Poids



- Finitions
-  .01 Blanc / RAL 9010
  -  .02 Noir / RAL 9005

