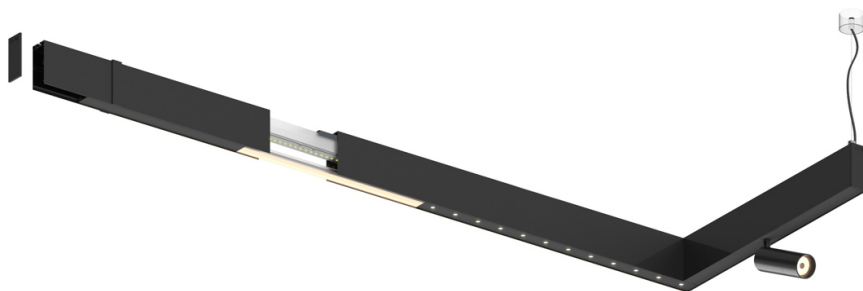
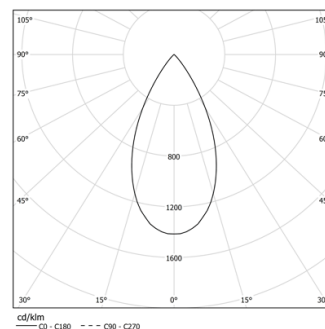


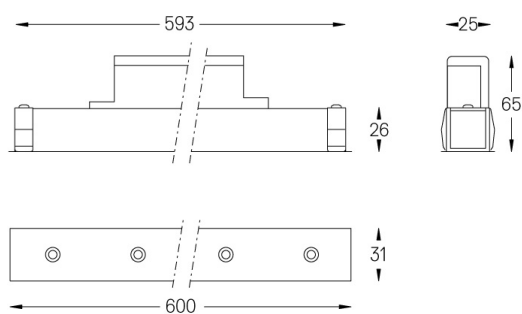
Design: O/M + Bartenbach GmbH

LED CRI>90 / >50.000h, L80/B10
2-step MacAdam / power supply included.
IP20 | 230Vac | 50/60Hz

LED	3000K	Source lumineuse	Luminaire
Puissance	26W		32W
Flux	2580lm		1960lm
Efficacité	99lm/W		61lm/W
LOR	-		0.7596899224806202
UGR	-		<16

Angle du faisceau
Flood 50°

Application

Poids
0,5Kg

Finitions

- .01 Blanc / RAL 9010
- .02 Noir / RAL 9005