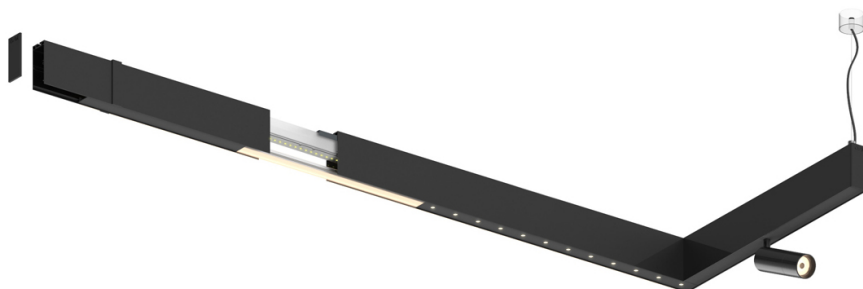
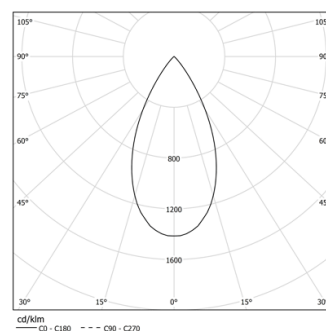


Design: O/M + Bartenbach GmbH

LED CRI>90 / >50.000h, L80/B10  
2-step MacAdam / power supply included.  
IP20 | 230Vac | 50/60Hz



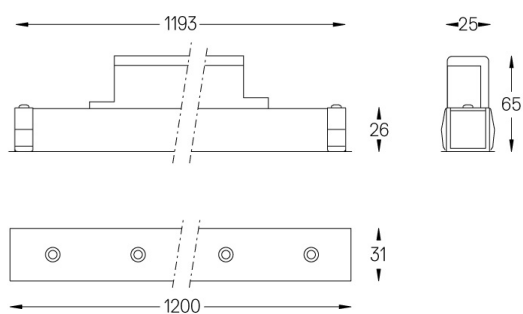
LED	2700K	Source lumineuse	Luminaire
Puissance	27W		32W
Flux	2400lm		1840lm
Efficacité	89lm/W		58lm/W
LOR	-		0.7666666666666667
UGR	-		<10



Angle du faisceau  
Flood 50°

Application

Poids  
0,8Kg



### Finitions

- .01 Blanc / RAL 9010
- .02 Noir / RAL 9005