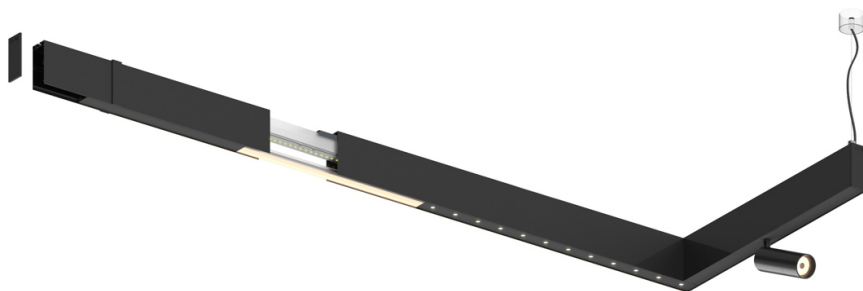
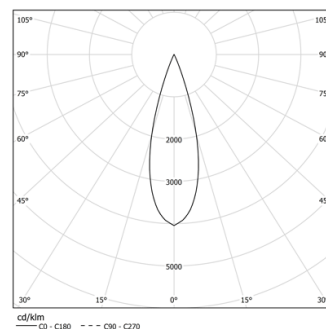


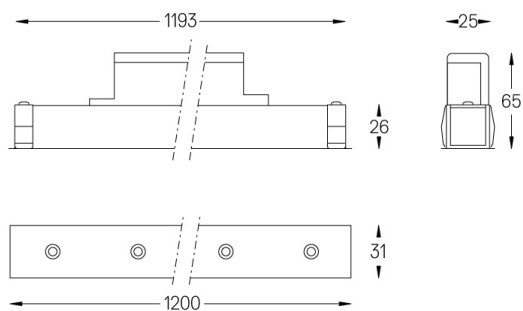
Design: O/M + Bartenbach GmbH

LED CRI>90 / >50.000h, L80/B10
2-step MacAdam / power supply included.
IP20 | 230Vac | 50/60Hz

LED	2700K	Source lumineuse	Luminaire
Puissance	27W		32W
Flux	2400lm		1760lm
Efficacité	89lm/W		55lm/W
LOR	-		0.7333333333333333
UGR	-		<10

Angle du faisceau
Medium 30°

Application

Poids
0,8Kg

Finitions

- .01 Blanc / RAL 9010
- .02 Noir / RAL 9005