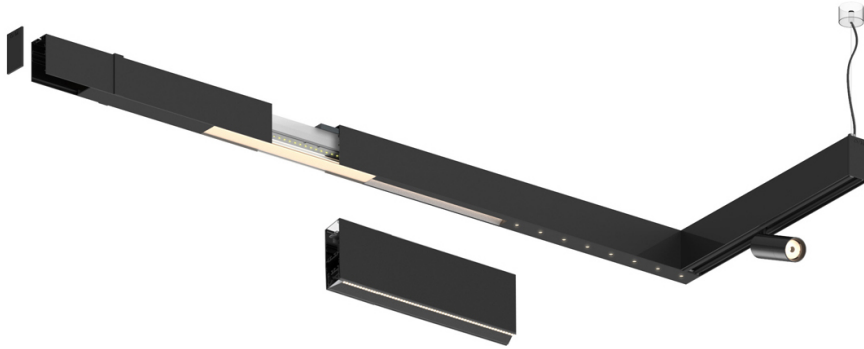


43W / 4400lm / 3000K / DALI / Wide flood
80° / 2304mm

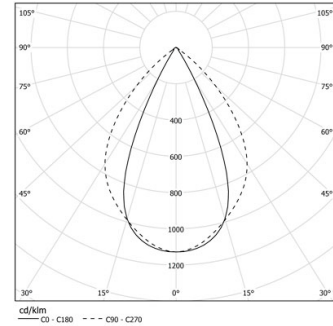
63167

Design: O/M + Bartenbach GmbH

LED CRI>90 / >50.000h, L80/B10 / 2-step MacAdam
Power supply included.
IP20 | 230Vac | 50/60Hz



LED 3000K	Fuente de luz	LLuminaria
Potencia	43W	50W
Flujo	5520lm	4400lm
Eficiencia	130lm/W	89lm/W
LOR	-	0.8
UGR	-	<19



Ángulo de haz
Wide flood 80°

Aplicación

Peso



Acabados

- .01 Blanco/RAL 9010
- .02 Negro/RAL 9005

