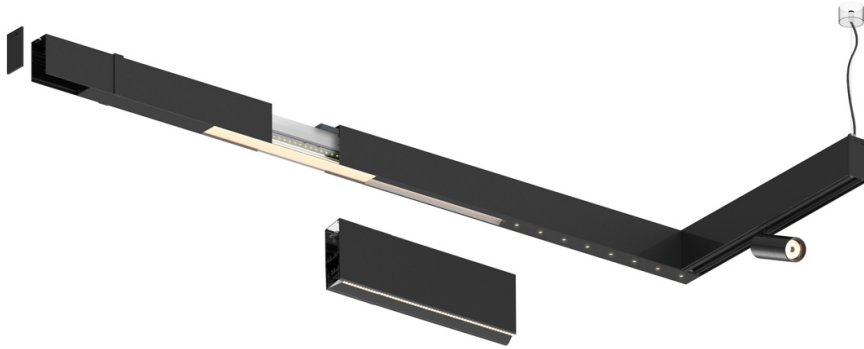


53W / 6000lm / 4000K / DALI / Wide flood
80° / 2899mm

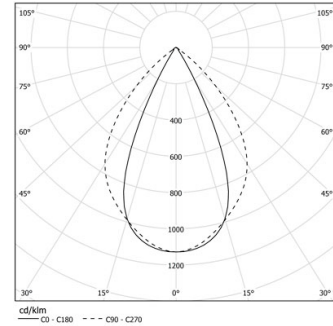
63163

Design: O/M + Bartenbach GmbH

LED CRI>90 / >50.000h, L80/B10 / 2-step MacAdam
Power supply included.
IP20 | 230Vac | 50/60Hz



LED	4000K	Fuente de luz	LLuminaria
Potencia	53W	53W	62W
Flujo	7500lm	7500lm	6000lm
Eficiencia	142lm/W	142lm/W	97lm/W
LOR	-	-	0.8
UGR	-	-	<19



Ángulo de haz
Wide flood 80°

Aplicación

Peso



Acabados

- .01 Blanco/RAL 9010
- .02 Negro/RAL 9005

