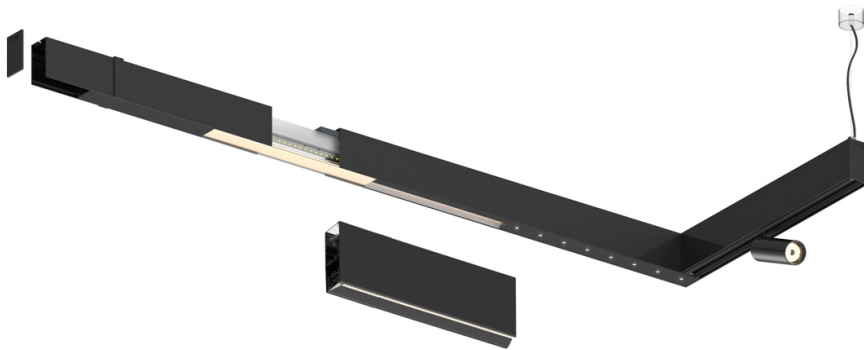


43W / 4800lm / 4000K / DALI / Wide flood  
80° / 2323mm

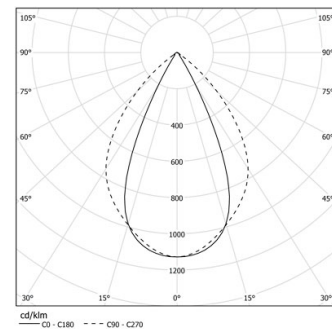
63159

Design: O/M + Bartenbach GmbH

LED CRI>90 / >50.000h, L80/B10 / 2-step MacAdam  
Power supply included.  
IP20 | 230Vac | 50/60Hz



LED	4000K	Fuente de luz	LLuminaria
Potencia	43W	50W	
Flujo	6000lm	4800lm	
Eficiencia	142lm/W	97lm/W	
LOR	-	0.8	
UGR	-	<19	



Ángulo de haz  
Wide flood 80°

Aplicación

Peso



Acabados

- .01 Blanco/RAL 9010
- .02 Negro/RAL 9005

