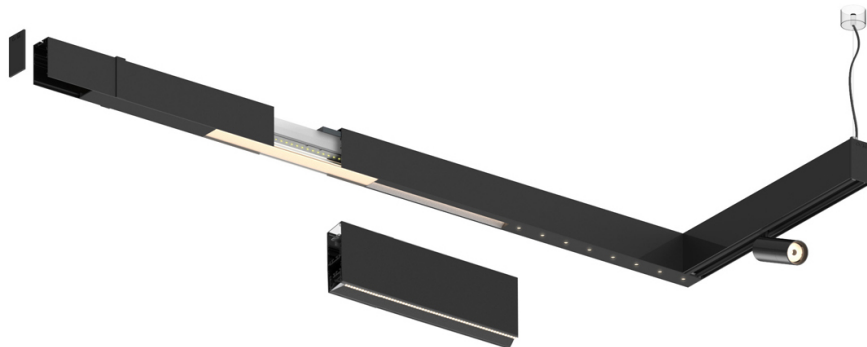
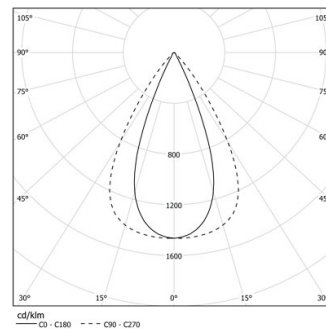


Design: O/M + Bartenbach GmbH

LED CRI>80 / >50.000h, L80/B10 / 2-step MacAdam
Power supply included.
IP20 | 230Vac | 50/60Hz



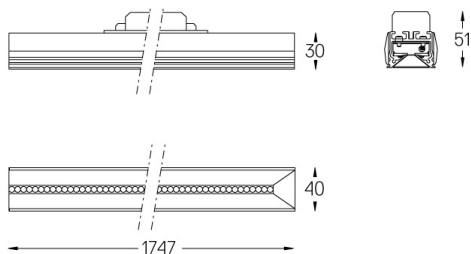
LED	2200K-5000K	Fuente de luz	LLuminaria
Potencia	34W*	40W*	
Flujo	4380lm*	3480lm*	
Eficiencia	120lm/W	85lm/W	
LOR	-	0.8273381294964028	
UGR	-	<13	



Ángulo de haz
Flood 65°

Aplicación

Peso



Acabados

- .01 Blanco/RAL 9010
- .02 Negro/RAL 9005