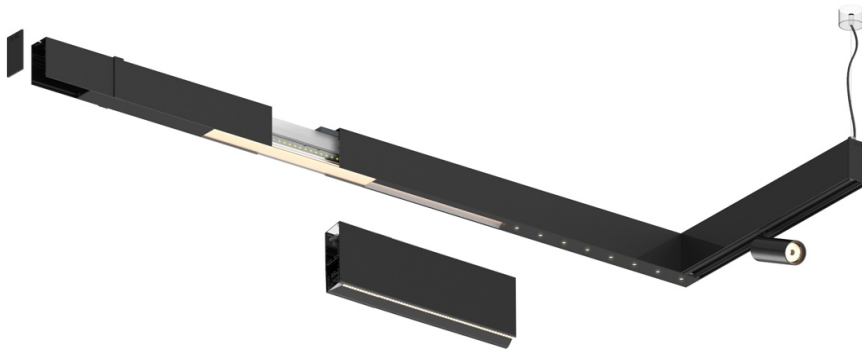


28W* / 2900lm* / 2200K-5000K / DALI /
Wide flood 80° / 1459mm

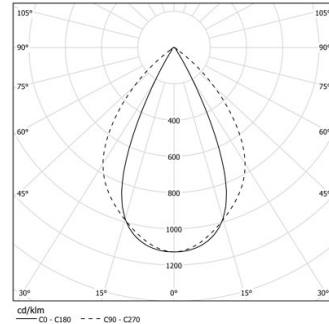
61192

Design: O/M + Bartenbach GmbH

LED CRI>80 / >50.000h, L80/B10 / 2-step MacAdam
Power supply included.
IP20 | 230Vac | 50/60Hz



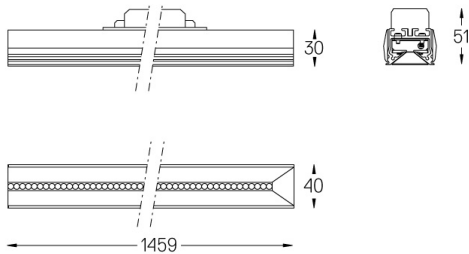
LED	2200K-5000K	Fuente de luz	LLuminaria
Potencia	28W*	33W*	
Flujo	3650lm*	2900lm*	
Eficiencia	120lm/W	85lm/W	
LOR	-	0.8273381294964028	
UGR	-	<19	



Ángulo de haz
Wide flood 80°

Aplicación

Peso



Acabados

- .01 Blanco/RAL 9010
- .02 Negro/RAL 9005